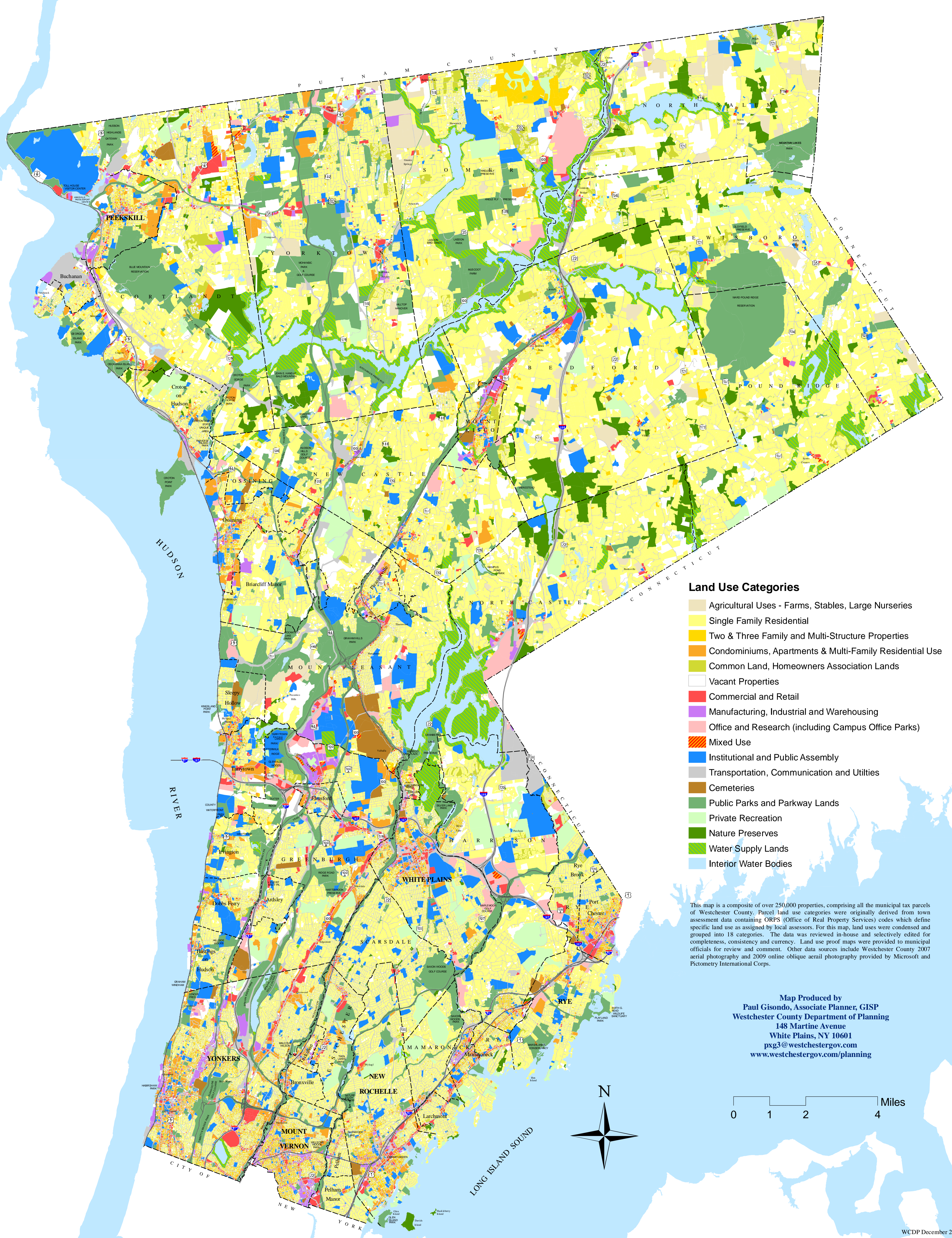


WESTCHESTER COUNTY, NEW YORK

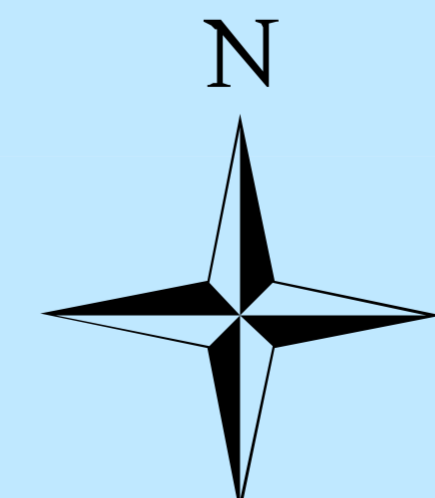
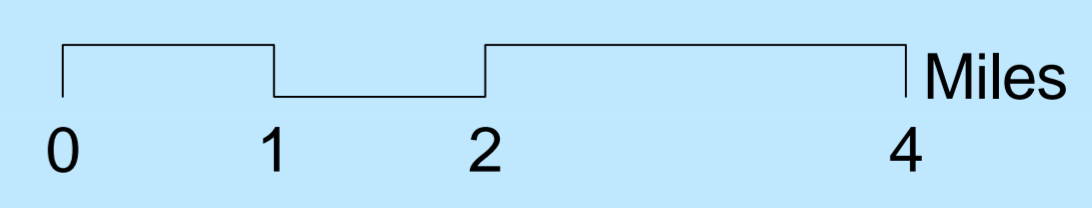


Land Use Categories

- Agricultural Uses - Farms, Stables, Large Nurseries
- Single Family Residential
- Two & Three Family and Multi-Structure Properties
- Condominiums, Apartments & Multi-Family Residential Use
- Common Land, Homeowners Association Lands
- Vacant Properties
- Commercial and Retail
- Manufacturing, Industrial and Warehousing
- Office and Research (including Campus Office Parks)
- Mixed Use
- Institutional and Public Assembly
- Transportation, Communication and Utilities
- Cemeteries
- Public Parks and Parkway Lands
- Private Recreation
- Nature Preserves
- Water Supply Lands
- Interior Water Bodies

This map is a composite of over 250,000 properties, comprising all the municipal tax parcels of Westchester County. Parcel land use categories were originally derived from town assessment data containing ORPS (Office of Real Property Services) codes which define specific land use as assigned by local assessors. For this map, land uses were condensed and grouped into 18 categories. The data was reviewed in-house and selectively edited for completeness, consistency and currency. Land use proof maps were provided to municipal officials for review and comment. Other data sources include Westchester County 2007 aerial photography and 2009 online oblique aerial photography provided by Microsoft and Pictometry International Corp.

Map Produced by
Paul Gisondo, Associate Planner, GISP
 Westchester County Department of Planning
 148 Martine Avenue
 White Plains, NY 10601
 pxg3@westchestergov.com
 www.westchestergov.com/planning



WCDP December 2009