

EXHIBIT 1

**CURRICULUM VITAE**

June 15, 2015

**Andrew Alan Beveridge**

**Office:** 233 Powdermaker Hall  
 Department of Sociology  
 Queens College--CUNY  
 Flushing, New York 11367  
 (718) 997-2837, 718-997-2852  
 (718) 997-2820 FAX

**Home:** 50 Merriam Avenue  
 Bronxville, New York 10708  
 (914) 337-6237  
 (914) 337-8210 FAX

**PERSONAL**

Born April 27, 1945, Madison, Wisconsin  
 Married, one child  
 U.S. Citizenship

**EDUCATION**

1968-73 Yale University (Sociology), M.Phil.1971; Ph.D. 1973  
 1967-68 Yale University (Econometrics, Economic Theory)  
 1964-67 Yale College (Economics), B.A. 1967, with honors in economics  
 1963-64 California Institute of Technology (Freshmen Year, Math, Science)

**RECOGNITION AND AWARDS**

2015 *Census Explorer* (Co-Creator) named Webby Honoree in Government  
 2015 *Social Explorer* (Co-Creator) awarded Gold Medal, Modern Library Award  
 2014 *Social Explorer* (Co-Creator) Webby Honoree in Education  
 2013 *Social Explorer* (Co-Creator) named Outstanding Achievement, Interactive Media Association  
 2012 *Social Explorer* (Co-Creator) named Publishing Standard of Excellence, Web Marketing Association  
 2010 *Social Explorer* (Co-Creator) named Outstanding Reference Source by the Reference and Users Services Association of the American Libraries Association  
 2007 American Sociological Association *Public Understanding of Sociology Award*  
 2006-pres. Marquis *Who's Who in the World*  
 2005-pres. Marquis *Who's Who in America*

**TEACHING EXPERIENCE**

2006-pres. Chair, Queens College, Department of Sociology  
 2002-pres. Professor, Queens College and Ph.D. Program in Sociology, Graduate School and University Center, The City University of New York  
 1981-2001 Associate Professor of Sociology, Queens College, and Ph.D. Program in Sociology Graduate School and University Center, The City University of New York  
 1981-82 Associate Professor of Sociology, Columbia University  
 1973-81 Assistant Professor of Sociology, Columbia University  
 1972-73 Acting Instructor, Department of Sociology, Yale University  
 1969-70 Assistant in Instruction, Department of Sociology, Yale University

**RESEARCH APPOINTMENTS**

2008-pres. Executive Committee Member and Affiliate, CUNY Institute for Demographic Research  
 1987-88 Visiting Researcher, Center for Studies of Social Change, The New School for Social Research  
 1982-83 Research Associate, Center for the Social Sciences, Columbia University  
 1980-82 Co-Director, Annual Housing Survey Project, Center for the Social Sciences, Columbia University  
 1970-72 Research Affiliate, Institute for African Studies (the former Rhodes-Livingstone Institute), Lusaka, Zambia  
 1965-69 Research Assistant and Programmer, Department of Economics and Economic Growth Center, Yale University

**OTHER RELATED ACTIVITIES (Continued)**

2

**OTHER RELATED ACTIVITIES**

- 2006-pres. Co-Founder (with Ahmed Lacevic) and President, *Social Explorer, Inc.* A web-based map and data service, now distributed by Oxford University Press and Pearson Publishing. Assisted Development of over 200 activities to accompany introductory Sociology, Political Science and History Texts.
- 1997-pres. President of Andrew A. Beveridge, Inc., a Demographic and Social Science Data Consulting Firm that provides consulting in litigation and other settings. (Cases and other engagements listed below.)
- 1993-pres. Consultant to the Newspaper Division of the *New York Times*. Work with reporters and editors regarding covering social science and demographic trends. Analyses and data cited over 1,000 times in newspaper. (Selected analyses listed below)
- 2001-pres. Columnist for the *Gotham Gazette*. Write Demographic Topic on recent trends and news related to social and demographic trends. (Topic Columns listed below.)  
Contributing Editor (2013-pres.)

**PUBLICATIONS****Book**

- 1979 *African Businessmen and Development in Zambia.* Andrew A. Beveridge and A. Oberschall. Princeton N.J. and Guildford, Surrey, United Kingdom: Princeton University Press, 382 pages.

**Edited Books**

- 2013 *New York and Los Angeles: The Uncertain Future.* (David Halle and Andrew A. Beveridge, Co-Editors) New York : Oxford University Press. 624 pages; 38 maps, 35 graphs, 27 photos, and 79 tables.
- 2011 *Cities in American Political History,* (Associate editor) (Editor. Richardson Dillworth), Sage-CQ Press, 760 pages. Named one of *Choice's* Outstanding Academic Titles of 2012.

**Papers and Chapters**

- 2014 "The Development and Persistence of Racial Segregation in United States Urban Areas: 1880 to 2010." Andrew A. Beveridge. Pp 35-61. In Ian Gregory and Alistair Geddes (eds.) *Towards Spatial Humanities: Historical GIS and Spatial History.* Bloomington, IN: Indiana University Press.
- 2013 "New York and Los Angeles: The Uncertain Future." David Halle and Andrew A. Beveridge. Pp. 1-30 in *New York and Los Angeles: The Uncertain Future.*
- 2013 "The Big Picture: Demographic and Other Changes." Andrew A. Beveridge and Sydney J. Beveridge. Pp. 33-78 in *New York and Los Angeles: The Uncertain Future.*
- 2013 "Financial, Economic and Political Crises: From Sub-Prime Loans to Dodd-Frank, Occupy Wall Street and Beyond." David Halle and Andrew A. Beveridge. Pp. 154-93 in *New York and Los Angeles: The Uncertain Future.*
- 2013 "Residential Diversity and Division: Separation and Segregation among Whites, Blacks, Hispanics, Asians, Affluent and Poor." Andrew A. Beveridge, David Halle, Edward Telles, and Beth Leavenworth Default. Pp. 310-42 in *New York and Los Angeles: The Uncertain Future.*
- 2011 "Avenue to Wealth or Road to Financial Ruin? Home Ownership and Racial Distribution of Mortgage Foreclosures." Elena Vesselinov and Andrew A. Beveridge. In Christopher Niedt and Marc Silver (eds.) *Forging a New Housing Policy: Opportunity in the Wake of Crisis.* Hempstead NY: National Center for Suburban Studies, Hofstra University, pp. 45-55.
- 2011 "The Rise and Decline of the L.A. and New York Schools." David Halle and Andrew A. Beveridge. In Dennis R Judd and Dick Simpson (eds.) *The City, Revisited: Urban Theory from Chicago, Los Angeles and New York.* Minneapolis, MN: University of Minnesota Press, pp. 137-69.

## PUBLICATIONS (Continued)

3

- 2011 "Commonalities and Contrasts in the Development of Major United States Urban Areas: A Spatial and Temporal Analysis from 1910 to 2000." Andrew A. Beveridge. In Myron P. Guttman, Glenn D. Deane, Emily R. Merchant and Kenneth M. Sylvester (eds.) *Navigating Time and Space in Population Studies*, Springer for the International Union for the Scientific Study of Population, pp. 185-216.
- 2009 "How Does Test Exemption Affect Schools' and Students' Academic Performance?" Jennifer L. Jennings and Andrew A. Beveridge. *Educational Evaluation and Policy Analysis*, vol. 31: June, pp. 153-75.
- 2008 "A Century of Harlem in New York City: Some Notes on Migration, Consolidation, Segregation and Recent Developments." Andrew A. Beveridge. *City and Community* vol. 7:4 pp. 357-64.
- 2007 "Who Counts for Accountability? High-Stakes Test Exemptions in a Large Urban School District." Jennifer Booher-Jennings and Andrew A. Beveridge. In A. Sadovnik, J. O'Day, G. Bohrnstedt, & K. Borman (eds.) *No Child Left Behind and the Reduction of the Achievement Gap: Sociological Perspectives on Federal Education Policy*. Routledge, Taylor & Francis Group, pp. 77-95.
- 2006 "Community-Based Prevention Programs in the War on Drugs: Findings from the 'Fighting Back' Demonstration." Leonard Saxe, Charles Kadushin, Elizabeth Tighe, Andrew A. Beveridge, David Livert, Archie Brodsky and David Rindskopf, *Journal of Drug Issues*, vol. 36:2 pp. 263-94.
- 2006 "Varieties of Substance Use and Visible Drug Problems: Individual And Neighborhood Factors." Julie Ford and Andrew A. Beveridge. *Journal of Drug Issues*, vol. 36:2, pp. 377-92.
- 2006 "Neighborhood Crime Victimization, Drug Use And Drug Sales: Results From The 'Fighting Back' Evaluation." Julie Ford and Andrew A. Beveridge. *Journal of Drug Issues*, vol. 36:2, pp. 393-416.
- 2006 "Scale-Up Methods as Applied to Estimates of Heroin Use." Charles Kadushin, Peter D. Killworth, Russell H. Bernard, Andrew A. Beveridge. *Journal of Drug Issues*, vol. 36:2, pp 417-40.
- 2004 "'Bad' Neighborhoods, Fast Food, 'Sleazy' Businesses and Drug Dealers: Relations Between the Location of Licit and Illicit Businesses in the Urban Environment." Julie Ford and Andrew A. Beveridge. *Journal of Drug Issues*, vol. 34:1, pp. 51-76.
- 2003 "Race and Class in the Developing New York and Los Angeles Metropolises: 1940 to 2000." Andrew A. Beveridge and Susan Weber. In David Halle (ed.) *New York and Los Angeles: Politics, Society and Culture, A Comparative View*. University of Chicago Press, pp. 49-78.
- 2003 "Residential Separation and Segregation, Racial and Latino Identity, and the Racial Composition of Each City." David Halle, Robert Gedeon and Andrew A. Beveridge. In David Halle (ed.) *New York and Los Angeles: Politics, Society and Culture: A Comparative View*. University of Chicago Press, pp. 150-90.
- 2003 "The Black Presence in the Hudson River Valley, 1790 to 2000: A Demographic Overview." Andrew A. Beveridge and Michael McMenemy. In Myra B. Armestead (ed.) *Mighty Change, Tall Within: Black Identity in the Hudson Valley*. State University of New York Press, pp. 263-80.
- 2002 "Immigrant Residence and Immigrant Neighborhoods in New York, 1910 and 1990." Andrew A. Beveridge. In Pyong Gap Min (ed.) *Classical and Contemporary Mass Migration Periods: Similarities and Differences*. Altamira Press, pp.199-231.
- 2002 "Immigration, Ethnicity and Race in Metropolitan New York, 1900-2000." Andrew A. Beveridge. In Anne Kelly Knowles (ed.) *Past Time, Past Place: GIS for History*. ESRI Press, pp. 65-78.
- 2001 "The Visibility of Illicit Drugs: Implications for Community-based Drug Control Strategies." Leonard Saxe, Charles Kadushin, Andrew A. Beveridge, David Livert,

**PUBLICATIONS (Continued)**

4

- Elizabeth Tighe, Julie Ford and David Rindskopf, *American Journal of Public Health*, vol. 91:12, pp. 1987-94.
- 2001 "Does Neighborhood Matter? Family, Neighborhood and School Influences on Eighth-Grade Mathematics Achievement." Sophia Catsambis and Andrew A. Beveridge. *Sociological Focus*, vol. 34, October, pp. 435-57.
- 2001 "Simulating Social Research Findings To Aid in Teaching Introductory-Level Sociology Courses." Andrew A. Beveridge, Joanne Miller, Dean Savage, Lauren Seiler and Carmenza Gallo. In Vernon Burton (ed.) *The Renaissance of Social Science Computing*. Champaign: University of Illinois Press.
- 2000 "Survey Estimates of Drug Use Trends in Urban Communities: General Principles and Cautionary Examples." Andrew A. Beveridge, Charles Kadushin, Leonard Saxe, David Rindskopf and David Livert. *Substance Use and Misuse*, vol. 35, pp. 85-117.
- 1997 "Think Globally Act Locally: Assessing the Impact of Community-Based Substance Abuse Prevention." Leonard Saxe, Emily Reber, Denise Hallfors, Charles Kadushin, Delmos Jones, David Rindskopf and Andrew A. Beveridge. *Evaluation and Program Planning*, vol. 20:3, pp. 357-66.
- 1988 "An Evaluation of 'Public Attitudes Toward Science and Technology' in *Science Indicators the 1985 Report*." Andrew A. Beveridge and Fredrica Rudell. *Public Opinion Quarterly*, vol. 53: Fall, pp. 374-85.
- 1986 "Microcomputers as Workstations for Sociologists." Andrew A. Beveridge. *Sociological Forum*, vol. 1:Fall, pp. 701-15.
- 1985 "Running Records and the Automated Reconstruction of Historical Narrative." Andrew A. Beveridge and George V. Sweeting. *Historical Social Research* vol. 35:July, pp. 31-44.
- 1985 "Local Lending Practices: Borrowers in a Small Northeastern Industrial City, 1832-1915." Andrew A. Beveridge. *Journal of Economic History*, vol. 65:2, pp. 393-403.
- 1985 "Action, Data Bases, and the Historical Process: The Computer Emulating the Historian?" Andrew A. Beveridge and George V. Sweeting. In Robert F. Allen (ed.) *Data Bases in the Humanities and Social Sciences*. Osprey Florida, Paradigm Press, Inc., pp. 117-22.
- 1981 "Studying Community, Credit and Change by Using 'Running' Records from Historical Sources." Andrew A. Beveridge. *Historical Methods*, vol. 14:4, pp. 153-62.
- 1980 "Organizing 'Running' Records to Analyze Historical Social Mobility." Andrew A. Beveridge, George R. Hess and Mark P. Gergen. In Joseph Raben and Gregory Marks (eds.) *Data Bases in the Humanities and Social Sciences*. Amsterdam and New York, North-Holland Publishing Company, pp. 157-64.
- 1977 "Social Effects of Credit: Cheshire County, New Hampshire: 1825-1860." Andrew A. Beveridge. *Regional Economic History Research Center Working Papers*, Autumn, pp. 1-33.
- 1974 "Economic Independence, Indigenization and the African Businessman: Some Effects of Zambia's Economic Reforms." Andrew A. Beveridge. *African Studies Review*, vol. 17:3, pp. 477-92.

**Maps**

- 2011 "Charles Burnett's Los Angeles, Circa 1970: The City" and "Charles Burnett's Los Angeles, Circa 1970: His Neighborhood." Andrew A. Beveridge. In Robert E. Kapsis (ed.) *Charles Burnett Interviews*. Jackson, MS, University of Mississippi Press, in folio between p. 94 and p. 95.

**Web Based Materials**

- 2005-15 *Social Explorer*. A system for retrieving, mapping, charting and graphing Census data from 1790 to present and other data. Co-Creator with Ahmed Lacevic and Social Explorer Team.

## PUBLICATIONS (Continued)

5

2013-- *Census Explorer*. Visualizations of Census Data. People Education and Income Edition, Commuting Edition, Retail Edition, Population Estimates Edition, Young Adults: Then and Now Edition, and 2010 Census Participation Rate Edition. Co-Creator with Ahmed Lacevic and Social Explorer Team and US Census Bureau. Young Adults: Then and Now Edition Co-Created with Minnesota Population Center and US Census Bureau. Winner Webby Nominee for Government, 2015

## Invited Pieces and Columns

**Gotham Gazette** Demographic Topic Columns: January 2001-2013.

“New York’s Changing Electorate: What It Means for the Mayoral Candidates” Jun 16, 2013  
 “New Plan for City Council Districts” (November 16, 2012) (Christian Salazar and Andrew A. Beveridge)  
 “Proposed City Council District Map Protects Incumbents” (November 15, 2012)  
 “The Attempt to Kill the ACS” (July, 2012)  
 “10 Years Later: Enumerating the Loss at Ground Zero” (September 10, 2011)  
 “Under a Different Name Census Data is Ready for Perusal” (August 11, 2011)  
 “Failure of Redistricting Reform Could Bring Reprise of 2002’s Fiasco” (June 16, 2011)  
 “Census Wounded City’s Pride but Probably Got the Numbers Right” (April 26, 2011)  
 “Census Brings Unpleasant Surprise for State Politicians” (January 04, 2011)  
 “Census Likely to Offer Accurate Count of New Yorkers” (September 16, 2010)  
 “Census Could Set Off Major Redistricting in State” (February 25, 2010)  
 “New York’s Now Beleaguered Financial Workforce” (August 2009)  
 “New York and the Fight Over the 2010 Census” (February 2009)  
 “The Senate’s Demographic Shift” (November 2008)  
 “A Shift in Albany Could Avert Higher Rents” (October 2008)  
 “An Affluent, White Harlem?” (August 2008)  
 “The School Divide Starts at Kindergarten” (June 2008)  
 “Housing Squeeze Shows No Sign of Easing” (May 2008)  
 “A Religious City” (February 2008)  
 “Will the 2010 Census ‘Steal’ New Yorkers?” (December 2007)  
 “The End of ‘White Flight’?” (November 2007)  
 “Feeling the Effects of a Housing Bust” (September 2007)  
 “No Quick Riches for New York’s Twentysomethings” (June, 2007)  
 “Women of New York City” (March, 2007)  
 “Stuyvesant Town and Peter Cooper Village, Then and Now” (September, 2006)  
 “What New Yorkers Are Like Now” – First Results of the American Community Survey” (August 2006)  
 “Hitting the 9 Million Mark” (June, 2006)  
 “New York’s Asians” (May, 2006)  
 “Undocumented Immigrants” (April, 2006)  
 “Transit Workers/Transit Riders; Beginning Lawyers Are Richer; 9 Million New Yorkers?” (March 2006)  
 “Teachers in NYC’s Institutions of Higher Learning” (January, 2006)  
 “Hispanics and the Ferrer Candidacy” (December, 2005)  
 “Disabled in New York City; Also: Is The City Still Booming?” (November 2005)  
 “Who Can Afford to Live in New York City?” (October 2005)  
 “Can NYC ‘Profile’ Young Muslim Males?” (August 2005)  
 “Upstate and Downstate – Differing Demographics, Continuing Conflicts” (July, 2005)  
 “Living at Home after College” (June, 2005)  
 “Four Trends That Shape The City’s Political Landscape” (May 2005).  
 “High School Students” (April, 2005)  
 “New York’s Responders and Protectors” (March, 2005)  
 “Who Got the Death Penalty” (February, 2005)  
 “Wall Street Bonus Babies” (January, 2005)  
 “New York Lawyers: A Profile” (December, 2004)

## PUBLICATIONS (Continued)

6

- "Bush Does Better and Other Election Results In NYC" (November, 2004)  
 "New York's Creative Class" (October, 2004)  
 "Portrait of Same-Sex (Married) Couples" (September 2004)  
 "New York City Is a Non-Voting Town" (August 2004)  
 "New York's Divided Afghans" (July 2004)  
 "Flaws in the New School Tests" (June, 2004)  
 "Why Is There A Plunge In Crime?" (May 2004)  
 "Estimating New York City's Population" (April, 2004)  
 "The Passion for Religion Ebbs" (March, 2004)  
 "Imprisoned In New York" (February, 2004)  
 "Who Are NYC's Republicans?" (January 2004)  
 "Five Hidden Facts about Housing--An Analysis of Data from the Housing and Vacancy Survey"  
 (December, 2003)  
 "Young, Graduated and in New York City" (October, 2003)  
 "Back To (Public and Private) School" (September, 2003)  
 "The Vanishing Jews" (July, 2003)  
 "The Affluent of Manhattan" (June, 2003)  
 "How Different Is New York City From The United States?" (May 2003)  
 "The Poor in New York City" (April, 2003)  
 "Eight Million New Yorkers? Don't Count On It" (March 2003)  
 "Does Archie Bunker Still Live in Queens?" (February 2003)  
 "Is There Still A New York Metropolis?" (January 2003)  
 "City of the Foreign-Born" (December, 2002)  
 "Can The US Live Without Race?" (November 2002)  
 "New York's Declining Ethnic" (October 2002)  
 "A Demographic Portrait of the Victims in 10048" (September, 2002)  
 "Manhattan Boom" (August, 2002)  
 "GOP Senate Majority Repeals Census 2000" (July, 2002)  
 "Changing New York City" (June, 2002)  
 "The Census Bureau's Bad Estimates" (May, 2002)  
 "The Boom 1990's?" (April 2002)  
 "Segregation" (March, 2002)  
 "Non-Legal Immigrants" (February, 2002)  
 "Counting Muslims" (January, 2002)  
 "The Arab Americans in Our Midst" (September, 2001)  
 "A White City Council" (August, 2001)  
 "Counting Gay New York" (July, 2001)  
 "Redistricting" (June, 2001)  
 "Politics and the Undercount" (May, 2001)  
 "False Facts about Census 2000" (April, 2001)  
 "Eight Million New Yorkers!" (March 2001)  
 "Redefining Race" (February, 2001)  
 "Census Bureau Finds 830,000 'Extra' New Yorkers" (January 2001)

## Other:

- 2013 "The Two Cities of New York: Wealth, Poverty, and Diversity in the Big Apple." *ASA Footnotes*, February p. 1.  
 2007 "Four Trends Shaping the Big Apple." *ASA Footnotes*, February, p. 1.  
 1996 "Sociologists: Eyes Open for Trends in New York City." *ASA Footnotes*, January, p. 1.  
 1996 "Stroll the Upper East Side for Lifestyles of the Elite." *ASA Footnotes*, March, p. 1  
 1988 "Credit to the Community: American Banking's Tribal Roots." *Thesis* (Spring), pp. 18-23.  
 1976 "African Businessmen in Zambia." *New Society*, 35:702: pp. 599-601.

## Book Reviews

- 2012 "Social Theory Two Ways: John Levi Martin's Structures and Actions" Review of *Social Structures and The Explanation of Social Action. Historical Methods Historical Methods: A Journal of Quantitative and Interdisciplinary History*, 45:4, 179-182.  
 1995 *The Assassination of New York*. Robert Fitch. *Contemporary Sociology*, vol. 24:March, pp. 233-34.  
 1990 *Doing Deals: Investment Banks at Work*. Robert G. Eccles and Dwight B. Crane. *Contemporary Sociology*, vol. 19:May, pp. 186-87.

## PUBLICATIONS (Continued)

7

- 1988 *The End of Economic Man? Custom and Competition in Labor Markets.* David Marsden. *Contemporary Sociology*, vol. 17:March, pp. 172-73.
- 1988 *Technocrimes: The Computerization of Crime and Terrorism.* August Bequai. *Society*, vol. 25:May/June, pp. 87-88.
- 1985 *The Economic Basis of Ethnic Solidarity: Small Business in the Japanese American Community.* Edna Bonacich and John Modell. *American Journal of Sociology*, vol. 90:January, pp. 942-45.
- 1979 *Oneida Community Profiles.* Constance Noyes Robertson. *Business History Review*, vol. 53:Autumn, pp. 277-78.
- 1978 *Urban Man in Southern Africa.* C. Kileff and W.C. Pendleton (eds.) *African Studies Association Review of Books*, vol. 4, pp. 25-26.
- 1977 *Colonialism in Africa, 1870-1960 Volume Four: The Economics of Colonialism.* Peter Duignan and L.H. Gann (eds.) *Business History Review*, vol. 51:Autumn, pp. 382-85.
- 1976 *The Quality of American Life: Perceptions, Evaluations, and Satisfactions.* Angus Campbell, Philip Converse, and Willard L. Rogers (eds.). *Political Science Quarterly*, vol. 91:Fall, pp. 529-31.
- 1976 *Corporate Power in an African State: The Political Impact of Multinational Mining Companies in Zambia.* Richard L. Sklar. *African Studies Association Review of New Books*, vol. 2, pp. 53-55.

**PUBLICATIONS (Continued)**

8

**Reports**

- 2000 *Fighting Back Household Survey, Interim Report of 1995-1999 Findings.* David Livert, Charles Kadushin, Leonard Saxe, Andrew A. Beveridge, David Rindskopf, Elizabeth Tighe, Jennifer Hoffman, Saul Kelner, Ricardo Barreras and Julie Ford.
- 1997 *Fighting Back Evaluation Interim Report: Wave II General Population.* Survey David Livert, Charles Kadushin, Leonard Saxe, Andy A. Beveridge, David Rindskopf, Elizabeth Tighe, Jennifer Hoffman, Saul Kelner, Ricardo Barreras and Julie Ford.
- 1997 *Monitoring Archival Indicators of Alcohol and Other Drug Harm: A Fighting Back Progress Report.* Andrew A. Beveridge, Elizabeth Tighe, Mary Jo Larson, David Rindskopf, David Livert, Susan Weber, Charles Swartz, John McKenna, Charis Ng and Leonard Saxe.
- 1997 *Social Trends in North America:* Andrew A. Beveridge, Vivian Brachet, Lorne Tepperman and Jack Veugelers. Prepared for the State of the Environment Report of the Consortium for Environmental Cooperation, Montreal, Quebec.
- 1996 *Fighting Back Program Interim Report,* Leonard Saxe, Emily Reber, Charles Kadushin, Andrew A. Beveridge, Mary Jo Larson, David Rindskopf, David Livert, Joe Marchese, Michael Stirrat and Susan Weber.
- 1994 *Black and White Property Tax Rates and Other Homeownership Costs in 30 Metropolitan Areas: A Preliminary Report.* Andrew A. Beveridge and Jeannie D'Amico. Queens College of the City University of New York, Department of Sociology, Program for Applied Social Research.
- 1994 *An Analysis of Black and White Income Differences: Queens County and the United States.* Andrew A. Beveridge and Jeannie D'Amico. Queens College of the City University of New York, Department of Sociology, Program for Applied Social Research.
- 1992 *Patterns of Residential Segregation in New York City, 1980-1990: A Preliminary Analysis.* Andrew A. Beveridge and Hyun Sook Kim. Queens College of the City University of New York, Department of Sociology, Program in Applied Social Research.
- 1988 *Integrating Social Science Workstations into Research and Teaching: Final Report to IBM.* Andrew A. Beveridge and Lauren Seiler. Queens College of the City University of New York, Department of Sociology.
- 1984 *Changing Lifestyles and Newspaper Reading: An Exploratory Study of Younger Adults.* Andrew A. Beveridge and Albert E. Gollin. Newspaper Readership Project, Newspaper Advertising Bureau.
- 1978 *Social Effects of Time of Use Pricing of Electric Power: A Sociological Approach.* Andrew A. Beveridge. Electric Power Research Institute

**SELECTED RECENT PRESENTATIONS****Presentations of Scholarly Work**

- 2014 Andrew A Beveridge, "Four Mayor, Two Thugs and Governor Moonbeam: New York and Los Angeles Compared" American Sociological Association, Annual Meeting, San Francisco, August 16-19
- 2013 Ahmed. Lacevic, Andrew A. Beveridge, and Sydney. Beveridge."New Directions in Visualization for Web Based Historical GIS." Presented at the Annual Meeting of the Social Science History Association, November 21-24, Chicago, IL
- 2012 Elena Vesselinov and Andrew A. Beveridge. "Racial/Ethnic Typology, Occupational Structure and Mortgage Foreclosures in Neighborhood Context." Annual Meeting of the American Sociological Association, August, 17 to 20, Denver, CO
- 2012 "Studying Disparate Impact in Housing". National Research Council, Committee for National Statistic. Workshop, June 14 and 15, Washington, DC. Presentation Summarized in *Benefits, Burdens, and Prospects of the American Community Survey: Summary of a Workshop.* (National Academies Press, Washington, DC. 2013)



**SELECTED RECENT PRESENTATIONS (Continued)****9**

- 2012 "The Genesis of Crisis: "looting" by lenders, default by profligate borrowers, or government housing incentives." Annual Meeting, Eastern Sociological Society, February 23 to 26, New York City.
- 2011 Elena Vesselinov and Andrew A. Beveridge. "Foreclosures, Subprime Loans and the Neighborhood Effects of Race and Class in Detroit and Phoenix." Annual Meeting of the American Sociological Association, Las Vegas, NV, August 23.
- 2011 Andrew A. Beveridge and Elena Vesselinov. "From Chicago to Las Vegas? The Housing Bubble, Ethnic Communities, Social Class and the Effects of Mortgage Foreclosures." Annual Meeting of the American Sociological Association, Las Vegas, NV, August 22.
- 2011 "The Demographics of Boom and Bust: New York and LA Metros, 1990 to 2011." Annual Meeting of the American Sociological Association, August 20, Las Vegas, NV.
- 2011 "How Do Current Districts Stack-Up." The Redistricting Puzzle: The Shifting Sands of Population and the Electorate: Changes in New York. CUNY Graduate Center. May 5.
- 2011 "Displacing Hope: Hope VI and the Destruction of Housing for Poor Families." Annual Meeting of the Urban Affairs Association, March 16-19, New Orleans, LA.
- 2011 "2010 Census: Research Issues and Opportunities." Panelist. Annual Meeting of the Eastern Sociological Society, Philadelphia, PA, February 26.
- 2011 "The Effects of Foreclosure on Educational Performance." Annual Conference of the Sociology of Education Association. Asilomar Conference Center Pacific Grove, California. February 18-20, 2011.
- 2010 "The Origins of the "Bubble" and the Financial Crisis 2008: "Looting" by Lenders or Default by Profligate Borrowers." Andrew A. Beveridge. Annual Meeting of the Social Science History Association, November 18-21, Chicago, IL.
- 2010 "Success in Cumulative Voting Systems." Andrew A. Beveridge and Robert Smith. Annual Meeting of the Social Science History Association, November 18-21, Chicago, IL.
- 2010 "Avenues to Wealth or Roads to Financial Ruin? Homeownership and the Distribution of Mortgage Foreclosures. Elena Vesselinov and Andrew A. Beveridge. Annual Meeting of the American Sociological Association, August 15, Atlanta, GA.
- 2010 "Teacher Effectiveness on High- and Low-Stakes Tests," Corcoran, Sean P., Jennifer L. Jennings, and Andrew A. Beveridge. Presented at the Institute for Research on Poverty Summer Institute, University of Wisconsin – Madison, June.
- 2010 "Social Effects of Foreclosures in New York and Los Angeles Metros, a Preliminary Analysis. Andrew Beveridge, and Elena Vesselinov. Eastern Sociological Society Annual Meeting, Boston, MA. March 18-21.
- 2010 "Homeowners No More: A First Look at the Foreclosure Crisis's Effects on Neighborhoods and Communities across the United States." Andrew Beveridge and Elena Vesselinov. Eastern Sociological Society Annual Meeting, Boston, MA. March 18-21.
- 2009 "Foreclosure Patterns and Demographic Trends in the Los Angeles and New York Metros." Presented at the Annual Meeting of the Social Science History Association. Long Beach, CA. November 12-15.
- 2009 "Cities: What the Classics Can Tell Urbanisms Today." Panel Presentation, Annual Meeting of the Social Science History Association, Long Beach, CA. November 12-15.
- 2009 "Reflecting on Efforts to Build Communities of Teachers, Learners, and Researchers using Web 2.0 Tools." Panel Presentation at the Annual Meeting of the American Sociological Association, San Francisco. August 8-11.

**SELECTED RECENT PRESENTATIONS (Continued)****10**

- 2009 "Sociologists and the Media: Developing Positive Relationships between Journalists and Academia." Workshop Presentation at the Annual Meeting of the American Sociological Association, San Francisco. August 8-11.
- 2008 "Religious Adherents and the 2000 Presidential Election: A Spatial Analysis." Presented at the Social Science History Association 2008 Annual Meeting, Miami, Florida, October 24-26.
- 2008 "Segregation Revisited: The Growth and Dispersal of Black, Latino, Immigrant and Ethnic Populations in United States Metropolitan Areas Since 1950" Presented at Historical GIS 2008. University of Essex, UK. August 21-22.
- 2008 "Teacher Effects on High and Low-Stakes Tests," Jennifer L. Jennings and Andrew A. Beveridge. Annual Meeting of the American Education Research Association, New York, NY, March 25-28.

**Presentations Regarding *Social Explorer***

- 2014 American Sociological Association, Annual Meeting, Research Poster, August 10-13, New York, NY
- 2014 National Science Foundation, March 25, Arlington, VA
- 2014 US Census Bureau, March 26, Suitland, MD
- 2014 American Association of Public Opinion Research, June 23, DC Chapter, Washington, DC3
- 2014 Bureau of Labor Statistics, June 23, Washington, DC.
- 2013 American Sociological Association, Annual Meeting, Research Poster, Annual Meeting, San Francisco, August 16-19
- 2013 National Science Foundation NSF Course Curriculum and Laboratory Improvement Program/Transforming Undergraduate Education in Science Conference and at NSF Atrium Presentation, January 23-25, Washington, DC.
- 2012 American Sociological Association, Annual Meeting, Research Poster, August 17-20, Denver, CO.
- 2011 American Sociological Association, Annual Meeting, Research Poster, August 21, Las Vegas, NV.  
 American Library Association, Annual Meeting, Oxford University Press, Booth, June 25, New Orleans, LA.  
 Center for Geographical Analysis, Harvard University, 2011 Conference, May 6 and 7, Cambridge, MA.  
 CUNY Journalism School, Ethnic Community and Media Census Training, May 5, New York, NY.  
 American Association of Public Opinion Research, New York Chapter, April 21, New York, NY.  
 Population Association of America, Pre-Conference Session, March 30, Washington, DC.  
 National Low Income Housing Coalition, Annual Conference, March 29, Washington, DC.  
 Census Bureau, Geography Division, January 28, Washington, DC.  
 National Science Foundation NSF Course Curriculum and Laboratory Improvement Program/Transforming Undergraduate Education in Science Conference and at NSF Atrium Presentation, January 26-28, Washington, DC.  
 CUNY Journalism School, Making Sense of the Census, January 3, New York, NY.
- 2010 Social Science History Association, Annual Meeting, "Exploring Long Term US Change: Research and Teaching with Social Explorer," November 18, Chicago, IL.  
 Jewish Community Relations Council, Community Connections Fellowship Orientation, New York, November 9.

**SELECTED RECENT PRESENTATIONS (Continued)**

11

- U.S. State Department, Office of International Visitors. "Changing Demographics and Multiculturalism in the United States." Flushing, NY, September 21.  
American Sociological Association, Annual Meeting, Research Funding Opportunities and Data Resources Poster, August 15, Atlanta, GA.
- 2009 American Sociological Association, Annual Meeting, Research and Data Support Poster, August 8-11, San Francisco, CA.  
Eastern Sociological Association, Annual Meeting, Research Workshop, April 2-5. Baltimore, MD.
- 2008 American Sociological Association, Annual Meeting, Research and Data Support Poster, August 2, Boston, MA.
- 2007 New York Chapter of the American Association of Public Opinion Research, October 4, New York, NY.  
American Sociological Association, Annual Meeting, Research and Data Support Poster, August 12, New York, NY.  
Coalition for the National Science Foundation, U.S. House Office Building Reception, Official Representative of the American Sociological Association, Washington, DC, June 26,.  
Pew Research Center, Washington, DC, June 25.
- 2006 National Center for Supercomputing Applications ,Invited Conference on Spatial Thinking in the Social Sciences and Humanities," December 18-19, Urbana, IL.  
Annual Meeting of the Social Science History Association, "Social Explorer as a Resource for Teaching," November 2-5,, Minneapolis, MN.  
Annual Meeting of the American Sociological Association, Research Workshop, "Geographical Information Systems (GIS) as a Research Tool for Sociologists," August 11-14, Montreal, Quebec.  
Annual Meeting of American Sociological Association, Research and Data Support Poster, August 11-14, Montreal, Quebec..  
National Center for Supercomputing Applications, Invited Conference on Spatial Thinking in the Social Sciences and Humanities, December 18-19, Urbana, IL.

**GRANTS AND AWARDS****Grants and Awards in Progress**

"INSPIRE: Studying and Promoting Quantitative and Spatial Reasoning with Complex Visual Data Across School, Museum, and Web-Media Contexts" Leilah Lyons, Josh Radinsky (University of Illinois Chicago) and Andrew A. Beveridge (Social Explorer, Inc.) . National Science Foundation, Tues-Type 2 Project, Information Technology Research, Discovery Research K-12, Cyberlearning: Transforming Undergraduate Education, Inspire, Geography and Spatial Sciences. 2012 to 2015, \$795,000 Total, \$242,000 Sub-Contract to Social Explorer.

"Census Analyses for the New York Metropolitan Area." *New York Times* Newspaper Division and CUNY Center for Advanced Technology, 1993-pres. Renewed 9/2012 to 8/2015, (\$317,563)

**Grants and Awards Completed**

"Creating and Disseminating Tools to Teach with Demographic Data Maps and Materials." Andrew A. Beveridge and Josh Radinsky, National Science Foundation, Division of Undergraduate Education, 2009-2013, \$332,896

"Integrated Public Use Microdata Sample Redesign." Subcontract through University of Minnesota from National Institutes of Health R01, 2006-2013 \$175,000.

"Collaborative Research—The National Historical Geographic Information System." National Science Foundation, Sociology Program, 2007-2012, \$99,725 (Continuing Award).

"The Distribution and Social Impact of Mortgage Foreclosures in the United States." Andrew A. Beveridge and Elena Vesselinov, National Science Foundation, Sociology Program, 2009-2010, \$144,995.

"Collaborative Research—Creating Exemplary Curricula and Supporting Faculty Development in Using Social Explorer to Teach with Demographic Data Maps." Andrew A. Beveridge and

**GRANTS AND AWARDS (CONTINUED)****12**

- Joshua Radinsky, National Science Foundation, Division of Undergraduate Education, CCLI, Phase 1, 2006-2008, \$149,970.
- "Collaborative Research—A Digital Library Collection for Visually Exploring United States Demographic and Social Change." Andrew A. Beveridge and David Halle, 2002-2007, \$706,746.
- "National Historical Geographical Information System." John Adams, Andrew A. Beveridge, et al, Subcontract of National Science Foundation Infrastructure Grant through University of Minnesota, Organize Historical City Based Data, 2001-2006, \$194,000.
- "Using Socio-Economic Characteristics of Residents of Student Neighborhoods as a Proxy for Socio-Economic Characteristics of Students: An Assessment Using ECLS-K." National Center for Education Statistic through Educational and Statistical Services Institute, 2004-2005, \$57,958.
- "Adding Census 2000 Data and Geographic Location to the ECLS-K Data Set." Andrew A. Beveridge and Sophia Catsambis, National Center for Education Statistic through Educational and Statistical Services Institute, 2002-2003, \$59,335.
- "Visualizing and Exploring United States Urban and Rural Social Change, 1790-2000: Interactive Multimedia and Web Based Tools." Andrew A. Beveridge and David Halle, National Science Foundation, Division of Undergraduate Education, Educational Materials Development, 2001-2004, \$418,000.
- "Evaluation of Fighting Back." Leonard Saxe, Charles Kadushin, Andrew A. Beveridge, Robert Wood Johnson Foundation, 1994-2002, \$370,000.
- "Development of a Map and Demographic Data Server," CUNY Software Institute, 2001, \$8,000.
- "Redistricting and Minority Voting Rights in Metropolitan New York." Randolph McLaughlin and Andrew A. Beveridge, 2000-2001, Pace Law School \$90,000 total; Andrew A. Beveridge \$60,000.
- "Mapping and Exploring New York City Change, 1905-2000: A Set of Interactive Web Based Tools." National Science Foundation, 1999-2000, \$78,960.
- "A Laboratory for Integrating Multimedia and World Wide Web Technology into Sociological Instruction." Samuel Heilman, Robert Kapsis, Max Kilger, Dean B. Savage and Andrew A. Beveridge, National Science Foundation, 1996-1998, \$47,846.
- "A Shared Computer Work Station and Storage System for Social Science Research." National Science Foundation, 1996-1997, \$20,964.
- "The Battle for Yonkers and the Dilemma of Desegregation." Presidential Research Award, 1993-1994, One Term Release.
- "Why Do Neighborhoods Change or Stay the Same?" Ford Foundation, Diversity Initiative Grant. 1993, Course Release and Student Stipends.
- "Separate American Dreams Face the Common American Dilemma: The Battle to Segregate Yonkers, New York, 1940-1990." Profession Staff Congress, Research Award Program, 1992-1994, \$6,800.
- "Using the Census for Social Mapping Across the Sociology Curriculum." President's Mini-Grant for Innovative Teaching, 1992-1993, \$3,500.
- "Modeling the Results of Union Elections by Developing Standard and Hierarchical Logistical Models." Diane Poland, Andrew A. Beveridge, and Wing-Shing Chan, Probe Program for Grand Challenges in the Social Sciences, National Center for Supercomputing Activities, 1992-1994, Super-Computer Time at National Center.
- "The Introductory Sociology Curriculum Initiative: An Empirical, Scientific Approach." Andrew A. Beveridge, Joanne Miller, Lauren H. Seiler and Dean B. Savage, National Science Foundation, Undergraduate Course and Curriculum Program, 1992-1995, \$160,000.
- "A Computer Laboratory for Quantitative and Scientific Reasoning in Sociology." Andrew A. Beveridge, Joanne Miller, Dean Savage and Lauren H. Seiler, National Science Foundation, Instructional Instrumentation and Laboratory Program, 1991-1994, \$50,825.

**GRANTS AND AWARDS (CONTINUED)**

13

- "Socially Mapping the New York Area." Ford Diversity Initiative Grant, 1992, Course Release Time.
- "Development of Research Mentorship and Laboratory in Sociology." CUNY Dean for Research and Academic Affairs, Department Faculty Development Program, 1991-1992, One Course Release Time.
- "Integrating Yonkers." Faculty-In-Residence Award, 1988-1989, One Course Release Time.
- "Credit Allocation and Community Change." Professional Staff Congress CUNY, Faculty Fellowship, 1987, \$6,200.
- "Credit Allocation and Community Change." Professional Staff Congress CUNY, Research Award Program, 1986-1988, \$13,268.
- "A Study of Industrial Development of an Agricultural Community Based Upon Financial Records: Keene and Cheshire County, New Hampshire, 1820-1915." Putnam Foundation, 1985-1988, \$33,000.
- "The Intelligent Work Station in Social Science Research: Development, Evaluation, Instruction and Demonstration." Lauren Seiler and Andrew A. Beveridge, International Business Machines Corporation, Special Study, 1985-1987, \$78,000 of hardware and software, \$17,000 funding.
- "Integrated Software for the Social Research Workstation." Andrew A. Beveridge and Lauren Seiler, Inter-University Consortium for Educational Computing, 1985-1986, \$20,000.
- "A Study of the Industrial Development of an Agricultural Community." National Endowment for the Humanities Grant, Basic Research Program, 1984-1985, \$75,000.
- "Credit Allocation and Community Change." Professional Staff Congress CUNY, Research Award, 1984-1985, \$6,973.
- "Credit Allocation and Community Change." Professional Staff Congress CUNY, Research Award, 1983-1984, \$6,928.
- Andrew A. Beveridge and Phoebus J. Dhrymes, "Longitudinal Transformation and Analysis of the Annual Housing Surveys." Department of Housing and Urban Development, 1980-1982, \$248,000.
- "Credit and Social Change: Cheshire County and Its Provident Institution, 1832-1915." American Council of Learned Societies, Fellowship, 1978-1979 \$13,500.
- "The Context of Credit in Wilmington, Delaware, 1800-1870." Regional Economic History Research Center, Eleutherian Mills Hagley Foundation, Grant and Fellow, 1978-1979, \$12,000.
- "Societal Effects of Credit Allocation." National Science Foundation Sociology Program Research Grant, 1976-1978, \$81,781.
- "Social Structure, Social Change and Credit Allocation: A Case Study." National Endowment for the Humanities Summer Stipend, 1976, \$2,000.
- "Social Structure, Social Change and Credit Allocation: A Case Study." American Philosophical Society, Grant, 1976, \$750.
- "African Businessmen in Zambia: Economic, Social and Governmental Impact." Foreign Area Fellowship Program Fellowship, 1970-1971, \$11,400.
- Pre-Doctoral Research Grant. National Institute of Mental Health, 1969-1972, Stipend and Tuition.

**OTHER SOCIOLOGICAL RESEARCH ACTIVITIES****Selected Analyses Appearing in *New York Times* and Elsewhere**

*Since 1992, Professor Beveridge, Queens College Sociology, and Social Explorer have been cited over 1,000 times in the New York Times, and materials have been syndicated or appeared elsewhere. Other media appearances include NPR, WCBS, WABC, WNBC, WNYW, CUNY-TV, CBS Radio, and the Associated Press.*

"Why the Doorman Is Lonely." *The New York Times*, January 11, 2015. By Julie Satow

**OTHER SOCIOLOGICAL RESEARCH ACTIVITIES (Continued)**

14

"Ceding to Florida, New York Falls to No. 4 in Population." *The New York Times*, December 24, 2014. By Jesse McKinley

"Gap Between Manhattan's Rich and Poor Is Greatest in U.S., Census Finds." *The New York Times*, September 18, 2014. By Sam Roberts

"Mostly White Forces in Mostly Black Towns: Police Struggle for Racial Diversity." *The New York Times*, September 10, 2014. By Shaila Dawan

"No MetroCard Needed." *The New York Times*, May 25, 2014. By Michelle Higgins

"The Three-Seat Strollers," April 10, 2014 - By Hannah Seligson

"Racial Patterns Are Found in Recent School Budget Elections." *The New York Times*, August 25, 2010, Pg. A19. By Sam Roberts.

"In New York, Black and Hispanic Strongholds Become More White." *The New York Times*, December 15, 2010; Pg. A17, By Sam Roberts. (Maps Pg. A17)

"Immigrants Make Paths To Suburbia, Not Cities." *The New York Times*, December 15, 2010 Pg. A15. By Sabrina Tavernise and Robert Gebeloff. (Maps Pg. A1, A16)

"Economic Boom in Washington Leaves Gaping Income Disparities." *The New York Times*, December 18, 2010, Pg. A11. By Sabrina Tavernise and Robert Gebeloff; Sabrina Tavernise.

"A Slice of Queens Where People Who Arrived in 1977 Are Newcomers." *The New York Times*, January 8, 2011 Pg. A15. By Joseph Berger.

"Black? White? Asian? More Young Americans Choose All of the Above." *The New York Times*, January 30, 2011, Pg. A1. By Susan Saulny.

"Smaller New Orleans After Katrina, Census Shows." *The New York Times*, February 3, 2011. By Campbell Robertson. (Includes maps and graphics.)

"For City Parents, a Waiting List for Nearly Everything." *The New York Times*, February. 22, 2013, By Soni Sangha.

"A Survey of the Flooding in N.Y.C. After the Hurricane." *The New York Times*, Nov. 21, 2012.

"New York Led Country in Population Growth Since 2010 Census." *The New York Times*, June 28, 2012. By Sam Roberts.

"BIG CITY--Offspring Who Cling To the Nest." *The New York Times*, June 24, 2012 - By Ginia Bellafante.

"100 Years Of Staying Put." *The New York Times*, April 27, 2012 - By Benjamin Weiser and Noah Rosenberg.

"Born Abroad, Well Off and Using Public Schools." *The New York Times*, February 14, 2012. By Kirk Semple.

"Solo in America." *The New York Times*, February 5, 2012 by Bill Marsh and Amanda Cox.

"Detroit Census Figures Confirm A Grim Desertion Like No Other." *The New York Times*, March 23, 2011 Wednesday, Pg. A1. By Katharine Q. Seelye.

"Non-Hispanic Whites Are Now a Minority in the 23-County New York Region." *The New York Times*, March 28, 2011, Pg. A19. By Sam Roberts.

"Cougars Aren't Mythical." *The New York Times*, October 15, 2009, Pg. C1. By Sarah Kershaw.

"Five-Year-Olds at the Gate: Why are Manhattan's elementary schools turning away kindergartners? How the Bloomberg administration missed the baby boom it helped create" *New York Magazine*, June 1, 2009. By Jeff Coplon.

**STUDIES CONNECTED WITH LEGAL CASES****Legislative Districting and Redistricting (Including Plans for Jurisdictions and for Community Groups)**

**STUDIES CONNECTED WITH LEGAL CASES (Continued)**

15

Center for Law and Social Justice, Medgar Evers College and Newman, Ferrara. *Favors v. Cuomo, et al.*, U.S. District Court for the Eastern District of NY (Hearing Testimony, 2012).

Frederick Brewington and Randolph McClaughlin, *Melvin Boone, et al., vs. Nassau County Board of Legislators, et al.* U.S. District Court for the Eastern District of New York. Produced report and plan and testified in trial regarding redistricting of Nassau County Legislature. 2011

Westchester County Board of Legislators, Plan for Redistricting Westchester County, Adopted May 17, 2011.

City of New Rochelle. Plan for Redistricting City Council Districts. Adopted May 10, 2011.

United States Department of Justice. *United States v. Port Chester*. U.S. District Court for the Southern District of New York. Investigation, Voting Analysis, Analysis of Potential Plans, Reports and Declarations, Testimony, 2002-2009. Cited in Opinion.

Emery, Celli, Curti, Brinkerhoff and Abadi. *Rodriguez v. Pataki*. U.S. District Court for the Southern District of New York. Reports, affidavits, deposition testimony and trial testimony related to claims about the State Senate Redistricting Plan in New York State, 2002-2004. Decided.

Randolph McClaughlin, Esq. *New Rochelle Voter Rights Committee, et al vs. New Rochelle, et al.* U.S. District Court for the Southern District of New York. Plaintiff's redistricting plan, affirmation, report, trial testimony, negotiated redistricting plan, settlement hearing testimony, 2003-2005. Decided and Settled.

Frederick Brewington, Esq., *Montano v. Suffolk County Board of Legislators*. U.S. District Court for the Eastern District of New York. Produced report and plan and testified in trial regarding proposed redistricting of Suffolk County Legislature. Cited in District Court Opinion, 2003. Decided.

City of Yonkers. Plan for the Redistricting the City Council. Adopted June 24, 2003.

Center for Constitutional Rights and Social Justice Center, Pace University Law School. *Goosby v. Town Board of Hempstead*. U.S. District Court for the Eastern District of New York. Designed and presented plaintiff's plan for districting the Town of Hempstead, a community of 720,000. Created single member district plan using census data and boundary files. Submitted plan including maps and data and testified at trial. Court ordered plan; affirmed by 2<sup>nd</sup> Circuit; Supreme Court denied certiorari. Plan and testimony cited in District Court and 2<sup>nd</sup> Circuit opinions. 1995-1997.

Connecticut Civil Liberties Union. *Coalition for Fair Representation, et al. v. City of Bridgeport, et al.* U.S. District Court for the District of Connecticut. Analysis of segregation patterns in Bridgeport Connecticut. Affidavit and maps filed. Cited in 2nd Circuit Decision. 1993-1994.

Berger, Poppe, Janiec. *Diaz, et al. v. City of Yonkers*. U.S. District Court for the Southern District of New York. Prepared redistricting plan for the Yonkers City Council, met with plaintiffs and defendants and in court. Plan accepted by City Council and District Court. 1992-1993.

**Housing Discrimination, Affirmative Steering, Rent Stabilization and Affordability, etc.**

United States Department of Justice. *United States v. City of New Orleans*, Case No. 12-cv-2011. United States District Court for the Eastern District of Louisiana. 2013-2014. (Report and Deposition, Settled 2014)

United States Department of Justice. *City of Joliet, v. Mb Financial Bank, N.A, Et Al, and United States v. City of Joliet*. United States District Court for the Northern District of Illinois. Report and Deposition, Trial Testimony,. 2012-2013. United States Department of Justice. Settled.

United States Department of Justice. *United States v. St. Bernard Parish*. United States District Court for the Eastern District of Louisiana. Report. Settled.

Disability Rights California. Analysis of Proposed City Council Group Home Zoning Law in Los Angeles. Report and Letter. 2012.

Relman and Dane. *ex rel. Curtis Lockey, et al. v. City of Dallas, et al.*, 3:11-cv-354-. United States District Court for the Northern District of Texas. Two Reports. 2012-pres.

## STUDIES CONNECTED WITH LEGAL CASES (Continued)

16

Marin Goodman, LLP. *Fair Housing Justice Center, Inc., et al. v. Silver Beach Gardens Corporation, et al.* United States District Court for the Southern District of New York. Report and Deposition, 2011-pres.

Foley and Lardner and U.S. Department of Justice. *MSP Real Estate, Inc., et al., v. City of New Berlin, et al.*, and *United States v. City of New Berlin*, U.S. District Court for the Eastern District of Wisconsin; Report, 2011. (Settled 2011.)

Foley and Lardner. *Bear Development LLC v. City of Kenosha and Redevelopment Authority of the City of Kenosha*, U.S. District Court for the Eastern District of Wisconsin. Report and Deposition Testimony, 2011. (Settled 2011.)

Hofstra University, School of Law, Law Clinic. *Isidoro Rivera, et. al. v. Incorporated Village of Farmingdale, et. al.* U.S. District Court for the Eastern District of New York. Report. 2009-2014. Settled.

Skadden, Arps, Slate, Meagher & Flom. *Fair Housing in Huntington Committee, et. al. v. Town of Huntington, New York, et. al.* U.S. District Court for the Eastern District of New York. Report and Rebuttal Report. 2010. (Decided 2010.)

South Brooklyn Legal Services. *Barkley v. United Homes LLC. et al.*, U.S. District Court for the Eastern District of New York, Report, Deposition and Trial Testimony. 2009-2011. (Jury Verdict 2011.)

Relman and Dane. *Anti-discrimination Center of Metropolitan New York v. County of Westchester, et al.* U.S. District Court for the Southern District of New York. Report, Rebuttal Report and Deposition Testimony, 2008-2009. (Settled 2009.)

Sullivan & Cromwell. *Vargas, et. al. v. Town of Smithtown.* U.S. District Court for the Eastern District of Long Island. Report. 2008. (Settled 2008.)

Southern New Jersey Legal Services. *Mount Holly Gardens Citizens in Action, Inc., et al v. Township of Mt. Holly, et al.* U.S. District Court for the District of New Jersey. Declaration, 2008 and 2010. (Summary Judgment Reversed by 3<sup>rd</sup> Circuit, Certiorari Pending))

The Advancement Project. *Anderson, et al. v. Jackson, et al.* U.S. District Court for the Eastern District of Louisiana. Report and Deposition re: Public Housing Demolition in New Orleans, 2007. (Decided 2007).

Three Rivers Legal Services and Southern Legal. *Helene Henry, et al v. National Housing Partnership.* U.S. District Court for the Northern District of Florida, Gainesville, Division. Three reports and deposition Testimony. 2007-2008. (Settled 2008.)

Legal Services of Southern New Jersey. *Bergen Lanning Residents in Action ,et al. vs. Melvin R. "Randy" Primus, et al.* Superior Court of New Jersey, Law Division, Camden County Report re: Bergen Square Redevelopment in Camden, NJ. 2005. (Decided 2005.)

Legal Services of Southern New Jersey. *Cramer Hill Residents Association, et al. vs. Melvin R "Randy" Primus, et al.* Superior Court of New Jersey, Law Division, Camden County. Report re: Cramer Hill Redevelopment in Camden, NJ. 2005. (Decided 2005.)

Legal Services of Southern New Jersey. *Citizens In Action ,et al. vs. Township of Mount Holly, et al.* Superior Court of New Jersey, Law Division, Burlington County. Report and Certification re: Redevelopment of the Gardens in Mount Holly. 2005. (Decided 2005.)

Legal Services of Southern New Jersey. *Hispanic Alliance, et al. vs. City of Ventnor, et al.* Superior Court of New Jersey, Law Division, Atlantic County Report and Testimony re: Ventnor Redevelopment. 2005. (Settled 2005.)

Legal Services of New Jersey. *Connie Forest, et al vs. Mel Martinez, et al.* Superior Court of New Jersey, Law Division, Essex County. Report re: Brick Towers Demolition in Newark. 2003-2006. (Decided 2006.)

Legal Services of Southern Florida, *Reese v. Miami-Dade County Housing Authority*, Analysis of Relocation of Public Housing Tenants. U.S. District Court for the Southern District of Florida. Report and Testimony at Trial. Cited in District Court Opinion. 2001-2003, and 2009. (Decided 2003, 2009.)



**STUDIES CONNECTED WITH LEGAL CASES (Continued)**

17

City of Long Beach, *Walton v. City of Long Beach*. Analyzed the vacancy rate in the City of Long Beach for 1992 through 2000. Filed affidavits in state and federal court. Testified in proceedings. Carried out various studies related to vacancy rate. 1997-2000. (Decided 2000, Reversed by Appellate Court.)

Arnold and Porter. *Witt, et al. v. New York State Board of Elections*. Analyzed those who have two or more domiciles where they regularly reside for case involving voting in more than one local election. 2000-2002. (Decided 2002.)

Coral Ortenberg Zeck and Condispoti. *Village of Spring Valley v. Town of Clarkstown*. Analyzed the affordability of housing in Rockland County New York for a case involving the annexation of a parcel to build such housing. Testified at trial. 2000. (Decided 2000.)

United States Justice Department, Civil Rights Division. *United States vs. Tunica Mississippi School District*. Analyzed proposal to build a new school near the Casino development in Tunica Mississippi, which was desegregated by order in 1971. 1999-2000. (Decided 2000.)

New York City Environmental Justice Alliance. *New York City Environmental Justice Alliance, et al. v. Rudolph W. Giuliani, et al.* Filed an affidavit that analyzed the racial and Hispanic distribution of the various community gardens for sale and not-for-sale in New York City in 1999. Decided, Cited in the 2<sup>nd</sup> Circuit opinion.

Connecticut Civil Liberties Union, Center for Children's Advocacy, NAACP Legal Defense Fund, and the Puerto Rican Legal Defense and Educational Fund. *Sheff v. O'Neil*. Analyzed the changing patterns of school enrollments in the Hartford area for this landmark case. Supplied a series of exhibits used by plaintiffs. 1998. (Decided.)

Connecticut Civil Liberties Union and National Association for the Advancement of Colored People. *NAACP v. Milford*. Analyzed historical housing and segregation patterns in the Milford region, and provided disparate impact analysis for not providing low-income housing as agreed. 1997-1998. (Settled 1997.)

Connecticut Civil Liberties Union and Puerto Rican Legal Defense Fund. *Pitts v. Hartford*. Analyzed placement of low-income public housing tenants in wake of destruction of public housing. Case settled. 1997.

American Civil Liberties Foundation of Maryland. *Carmen Thompson, et al. vs. U.S. Department of Housing and Urban Development, et al.* Analysis of various proposed plans for the relocation of public housing tenants throughout the Baltimore metropolitan area. Created a series of maps and analyses. Prepared trial testimony. Consent Decree Entered, April 1996.

Gurian and Bixon; Davis, Polk and Wardwell. *Open Housing Center, Inc. vs. Kings Highway Realty, a Division of Provenz Realty Corp.; Provenz Realty Corp; Diane Provenz; Evelyn Cannon; and Barbara Noonan*. Analyzed real estate "tester" data and apartments that various clients were shown. Imputed racial status of clients by using GIS techniques. Prepared affidavit. Cited in judge's opinion denying summary judgment. 1994-1996. (Settled, 1996.)

Westchester Legal Services and Sullivan and Cromwell. *Carol Giddins, et al. v. U.S. Department of Housing and Urban Development, et al.* Analyzed various proposed plans to end racial steering of Section 8 tenants to South West Yonkers. Maps and analyses incorporated into consent decree, and still in use in placing tenants. 1992-1994 and continuing.

Metropolitan Action Institute. *Analysis of Housing Segregation Patterns in Yonkers, New York and Starrett City, Brooklyn, 1983-1984*. (Materials Used for Testimony of Paul Davidoff.)

**Federal Court Jury System Challenges (All Cases Decided.)**

Andrea Hirsch, *Martinez v. Kelly*. U.S. Appeals Court for the Second Circuit. Analyzed effects of peremptory challenges for *habeas corpus* petition. 2006-2007.

Stern Shapiro Weissberg & Garin. *United States v. Darryl Green, et al.* U.S. District Court for the Eastern District of Massachusetts. Analyzed jury selection system for using Census data, local lists and other materials. Filed 7 declarations and testified twice. 2004-2006.

Federal Public Defender, Eastern District of LA, New Orleans, LA. *United States v. Torres*. Analyzed jury selection system for the Eastern District of Louisiana based upon Census Data and Estimates, as well as filings in the Eastern District. Declaration filed. 2006.

**STUDIES CONNECTED WITH LEGAL CASES (Continued)**

18

Federal Public Defender, Eastern District of LA, New Orleans, LA. *United States v. Caldwell*. Analyzed jury selection system for the Eastern District of Louisiana based upon Census Data and Estimates, as well as filings in the Eastern District. Declaration filed. 2006.

Federal Public Defender, Western District of PA, Pittsburgh. *United States v. Lawrence Skiba*. Analyzed jury selection system for the Pittsburgh Division of the Western District of Pennsylvania based upon Census Data and Estimates, as well as filings in the Western District. Affidavit filed. 2004.

Federal Public Defender, Western District of PA, Pittsburgh. *United States v. Minerd*. Analyzed jury selection system for the Pittsburgh Division of the Western District of Pennsylvania based upon Census Data and Estimates, as well as filings in the Western District. Affidavit filed. 2002.

Federal Public Defender, Western District of PA, Erie, PA. *United States v. Rudolph Weaver*. Analyzed jury selection system for the Pittsburgh Division of the Western District of Pennsylvania based upon Census Data and Estimates, as well as jury lists and voting. Affidavit Submitted 2001, Testified.

Newman Schwartz and Greenberg. *United States v. Albert J. Pirro, Jr.* Filed affidavit that analyzed representation in master jury wheel for White Plains and Foley Square Court Houses in the Southern District using census data with respect to the dilution of Italian Americans likely to be on a jury, if venue changed from White Plains to Foley Square. Venue change motion was denied. 2000.

Polstein, Ferrara, Dwyer and Speed and Stephen P. Scaring. *United States v. Dennis McCall, Trevor Johnson*. Analyzed representation in master jury wheel for White Plains Court House in the Southern District. Filed affidavit, which was cited in judge's opinion. 1998.

Curtis, Mallet-Prevost, Colt and Mosle, *United States v. Don King and Don King Productions*. Analyzed representation in master jury wheel for New York City Courthouse in the Southern District. Affidavit and Consulting. 1997-1998.

Dominick Porco. *United States v. Kevin Veale*. Analyzed representation in master jury wheel for White Plains Court House in the Southern District. Filed affidavit. 1997.

Diarmuid White, *United States v. Jose Reyes, et al.* Analyzed representation in master jury wheel for New York City Courthouse in the Southern District. Report and testimony in case cited in the judge's opinion. 1996.

**State Court Jury System Challenges (All Cases Decided.)**

Joseph Flood and Steven Malone. *State of Arkansas v. Daniel Pedraza Munoz*, Declaration. 2013.

Fitch Richardson, *Commonwealth of Virginia v. Prieto*. Fairfax County Virginia Circuit Court. Affidavit and Trial Testimony, 2010.

Capital Defenders Office, Atlanta GA. *State of Georgia vs. Jason McGhee*. Forsyth County Georgia State Court. Trial Testimony, 2010.

Public Defenders Office and Joseph Flood, *Commonwealth of Virginia v. Sanchez*. Prince William County Virginia Circuit Court. Analyzed Jury Selection in Prince William County, VA. Affidavit, 2008.

Ferrell Law, *Commonwealth of Virginia v. Ajan*. Prince William County Virginia Circuit Court. Analyzed Jury Selection in Prince William County, VA. Affidavit, 2008.

New Hampshire Public Defender, *New Hampshire v. Addison*. Hillsborough County, New Hampshire, North Division, Superior Court. Declaration, Deposition and Testimony, 2008.

Public Defenders Office, *Commonwealth of Virginia vs. Portilla-Chicas*. Stafford County Virginia Circuit Court. Analyzed Jury Selection in Stafford County, VA. Affidavit, 2006.

Virginia Indigent Defense Commission, *Commonwealth of Virginia vs. Rogers*. Stafford County Virginia Circuit Court. Analyzed Jury Selection in Stafford County, VA. Report and Testimony, 2006.

**STUDIES CONNECTED WITH LEGAL CASES (Continued)**

19

Criminal Legal Clinic of Syracuse University Law School, *People v. Tyisha Taylor*. Syracuse City Court. Analyzed Jury Selection System for Syracuse and Onondaga County, New York. Testimony, 2005.

Capital Defenders Office, *New York State v. Sweat*. Analyzed representation in jury selection in Broome County, New York. Two affidavits filed, one relating to factors likely to lead to underrepresentation of African Americans in Jury Pool, another related to the operation of the allocation of jurors among courts in Broome County. (Capital Murder Case.) 2003

Michael J. Spiegel, *New York State v. Dennis Salvador Alvarez-Hernandez*, Analyzed representation in jury selection in Westchester County, New York. Analysis based upon census data and estimates, and an emulation of the reported jury selection process using voter lists and other sources. Filed affidavit reporting results. (Capital murder case.) 2001--2003

Capital Defenders Office, *New York State v. Taylor*. Analyzed representation in jury selection in Queens County, New York. Analysis based upon census data and estimates, and an emulation of the reported jury selection process using voter lists and other sources. Filed affidavit reporting results; testified at hearing. Produced demographic analyses by town to assist in jury selection. Testified in 2002. (Capital murder case.) 2000-2002

Mann and Mitchell, *State of Rhode Island vs. David Tremblay*. Analyzed representation in jury selection in Bristol and Providence Counties, Rhode Island. Affidavit filed that includes an analysis of the geographic, racial, and Hispanic representation of jurors in counties in Rhode Island and includes an estimate of the disparities by race and Hispanic status. 1999-2001.

Capital Defenders Office, *New York State v. McCoy*. Analyzed representation in jury selection in Suffolk County, New York. Analysis was based upon census data and estimates, and an emulation of the reported jury selection process using voter lists and other sources. Filed affidavit reporting results. Produced demographic analyses by town to assist in jury selection. (Capital murder case.) 1997-1998.

Reynolds, Caronia and Gianelli. *New York State v. Robert Shulman*. Analyzed representation in jury selection in Suffolk County, New York. Analysis was based upon census data and estimates, and an emulation of the reported jury selection process using voter lists and other sources. Filed affidavit reporting results. (Capital murder case.). 1997. Opinion reproduced in *New York Law Journal*.

Capital Defenders Office, *New York State v. Gordon*. Analyzed representation in jury selection in Queens County, New York. Analysis was based upon census data and estimates, and an emulation of the reported jury selection process using voter lists and other sources. Filed affidavit reporting results. (Capital murder case.) 1997. Opinion reported on and reproduced in *New York Law Journal*.

Capital Defenders Office, *New York State v. Sam Chinn, III*. Analyzed representation in jury selection in Onondaga County. Affidavit filed that presented an analysis of the geographic, racial, and Hispanic representation of jurors. It includes an estimate of the disparities by race and Hispanic status. Plea bargain offered and accepted. Discussed at presentation at the New York State Defenders Association, Glen Falls, NY. (Capital murder case.) 1997.

Capital Defenders Office, *New York State v. George Bell*. Analyzed representation in jury selection in Queens County, New York. Analysis was based upon census data and estimates, and an emulation of the reported jury selection process using voter lists and other sources. Filed affidavit reporting results. (Capital murder case.) 1996-1997.

Capital Defenders Office, *New York State v. Hale*. Analyzed representation in jury selection in Kings County, New York. Analysis was based upon census data and estimates, and an emulation of the reported jury selection process using voter lists and other sources. Filed affidavit reporting results. (Capital murder case.) 1996-1997.

**Employment Discrimination**

Shneyer and Shen. *Grimston vs. Marsh and McLanahan*. Analyzed employment patterns based upon Census data and defendant records. Filed expert report and testified in deposition. Case Settled. 1998-2000.

**STUDIES CONNECTED WITH LEGAL CASES (Continued)**

20

Shneyer and Shen. *Maglasang vs. Beth Israel Medical Center*. Analyzed employment patterns based upon Census data and defendant records. Filed expert report and testified in deposition. Case Settled. 1999-2000.

Shneyer and Shen. *Williams vs. Safesites, Inc.* Analyzed employment patterns based upon Census data and defendant records. Filed expert report. 1998. Decided.

Shneyer and Shen. *Lachica vs. Emergency Medical Services*. Analyzed employment patterns based upon Census data and defendant records. Case Settled. Filed expert report. Case Settled. 1996-1997.

**Other Legal Projects**

Dewey & LeBoeuf (transferred to Winston, Strawn) and Latino Justice (PRLDEF). *Adriana Aguilar, et. al., v. Immigration and Customs Enforcement, Division of the United States Department of Homeland Security, et. al.* U.S. District Court for the Southern District of New York. Report, Rebuttal Report and Deposition Testimony, 2010-2012. Settled 2013.

Debevoise & Plimpton; *Five Borough Bicycle Club, et al v. City of New York, et al.* U.S. District Court for the Southern District of New York. Summoning Patterns Regarding Critical Mass Rides in Manhattan. Report, Deposition and Trial Testimony, 2008-2009. Decided.

Rabinowitz, Boudin, Standard and Krinsky, *Garrison v. I.R.S.* U.S. District Court for the District of Columbia. Filed expert report and testified at trial. Analysis based upon a survey of a sample of all synagogues in the United States. 1991-1992. Settled.

**OTHER MAJOR STUDIES AND ANALYSES**

Time-Warner Cable of New York. Analyzed and provided maps with underlying ethnic and racial composition for each of the six cable systems managed by Time-Warner Cable in Manhattan, Queens and Brooklyn, 1998-1999 (Proprietary).

New York *Times*. Analyzed circulation patterns of the *New York Times* in connection with their launch of the Boston and Washington editions, 1996-1997 (Proprietary).

Newspaper Association of America. Analysis of Field Experiment of Full-Color Run of the Press Advertisements in Richmond, Virginia, 1992.

Newspaper Advertising Bureau. Analysis of a Panel Study of Change in Newspaper Readership among Young Adults, 1983-1984.

Friends of Vincenza Restiano. Political Consulting, Polling, and Voting Analysis, Computer Based Voter List Organization, 1983, 1985, 1987, and 1991.

Abt Associates, through Center for the Social Sciences, Columbia University. Transfer of Annual Housing Survey Project to Abt, 1982.

Response Analysis Corporation, Princeton, N.J. Problems in Reliability of Longitudinal Household Surveys. 1982.

**PROFESSIONAL MEMBERSHIPS AND ACTIVITIES**

Future Directions in Spatial Demography Specialist Meeting. Invited participant. Convened by the University of California, Santa Barbara, Penn State University, and NIH Advanced Spatial Analysis Training Program (NICHD 5R-25 HD057002-04) Santa Barbara, CA December 12-13, 2011.

Editorial Board Member, *Spatial Demography*, 2012-pres.

American Sociological Association: Member, Park Award Committee, 2013; Search Committee, Editor of *City and Community*; 2008-2009; Organizer, sessions on Applied and Evaluation Research, 1998; Organizer, special session on New York Trends, 1996; Organizer, sessions on Economy and Society, 1984; Organizer, sessions on Social Change, 1979.

National Science Foundation

**OTHER MAJOR STUDIES AND ANALYSES**

21

Review Panel Member: Transforming Undergraduate Education in Science, (also Course Curriculum and Laboratory Improvement ) 2011, 2010, 2007, 2006, 2005, and other earlier years; Cyber Discovery of Innovation, 2011; Math Science Partnership, 2009.

Advisory Board Member: School Attendance Boundary Information System (SABINS), 2009 to present.

Advisory Workshop Member, General Social Survey (GSS): The Next Decade and Beyond, 2007; Future Investments in Large-Scale Survey Data Access and Dissemination, 2010.

Occasional Reviewer, NSF Sociology Program.

Occasional Reviewer, American Sociology Review, American Journal of Sociology, Sociological Forum, and other journals

Eastern Sociological Society: Vice President 1997-1998; Program Committee, 1991-1992; Co-Chair, Computer Committee, 1985-1987; President and Discussant, Women's History Session, 1985; Member, Computer Committee, 1984-1985; Coordinator, Computer Workshops, 1984 Annual Meeting; Co-Chair, Membership Committee, 1983-1984; Member, Papers Committee, 1983-1986; President, Historical Sociology Session, 1983; Co-Chair, Papers Committee, 1982-1983; Chair, Membership Committee, 1981-1982; Co-Chair, Conference Committee, 1980-1981.

American Association for Public Opinion Research: Program Committee, 1983-84; Nominating Committee, 1985-1986; Task Force Regarding the Use of Survey-based Evidence in Legal Proceedings, 2010.

New York Chapter, American Association for Public Opinion Research, Associate Program, Chair 2006-07; Program Chair, 2007-08.

International Sociological Association, Research Liaison Committee on Economy and Society

American Economic Association

Social Science History Association

Population Association of America

**COURSES TAUGHT**

Graduate: (M.A. and Ph.D.) Demography; Computer Applications in the Social Sciences; Advanced Social Statistics; The Sociological Study of Economies; Logic of Social Research; Survey Research Methods; Co-Operative Education Field Placement; Demography; Integrated Social Research; Ph.D. Dissertation and M.A. Thesis Supervision.

Undergraduate: New York City in Your Neighborhood; Social Change in the City; Methods of Social Research; Sociology of Economic Life; Third World in Social Change; Social Statistics; Sociological Analysis; New York Area Undergraduate Research Program (at Columbia): Housing Crisis in New York City , Equity of the Criminal Justice System, Implementation of No-Fault in New York.

**UNIVERSITY, COLLEGE AND DEPARTMENTAL ACTIVITIES**

CUNY Podcast, 2011, Assessing the Census

CUNY Forum on CUNYTV, October, 27, 2009; April 20, 201, and May 5, 2012.,

CUNY Research Foundation, Faculty Advisory Committee, 2006-pres.; Board of Directors, 2006-pres.

CUNY Professional Staff Congress, Legislative Committee, 2000-2001; CUNY, University Committee on Research Awards, 1988-1991; CUNY, University Computer Policy Committee, 1986-1987; CUNY/PSC Sociology Research Award Panel, 1986-1987; Graduate Center Sociology Program, Chair, Search Committee, 1989-1990; Methods Subcommittee, 1986-1987; Computers Committee, 1987-1990.

Queens College, Committee on Fellowship Leave, 1990-1991; Queens College, Committee on Research and Sponsored Programs, 1982-1986; Ad Hoc Computer Committee, Division of Social Sciences, 1982-1986, 1994-1996, 1998-pres.; Official Representative to the Inter-University Consortium for Political and Social Research (ICPSR), 1983--; Workload Committee, 2007-09; Executive Committee of College Personnel and Budget Committee, 2006-2011

Queens College, Department of Sociology, Chair 2006-11 ;Computer Committee, 1981-2005. (Chair most years); Queens College, Departmental M.A. Program Committee, 1981-2005 (Director and Chair, 1982-1987, 2001-2003, 2004-2006).

**CIVIC AND COMMUNITY ACTIVITIES**

**COURSES TAUGHT (Continued)**

**22**

Yonkers Board of Education, Trustee 1986-1990. President, 1988-1989. Chair, Policy Committee, 1989-1990; Chair, Spelling Bee Committee, 1986-1988.

Yonkers Democratic Party, Second Vice-Chair and District Leader, 1991-1992; District Leader, 1995-2002

Council of Large City School Districts, 1986-1991. Executive Committee, 1990-1991; Committee on School Choice, 1991; Lobbying Committee, 1989-1990.

New York State School Boards Association, Member Federal Relations Network, 1989-1990.

Longvale Homeowners Association, Board of Directors, 1983-1985. President 1985.

Yonkers Private Industry Council, 1988-1990. Chair, Program and Planning Committee, 1989-1990.

Founding Member and Vice-President, Citizens and Neighbors Organized to Protect Yonkers (CANOPY), 1987-1992.

Volunteer, Friends of Nicholas Wasicsko, 1989 and 1991.

Volunteer, Friends of Vincenza Restiano, 1983, 1985, 1987, and 1991.

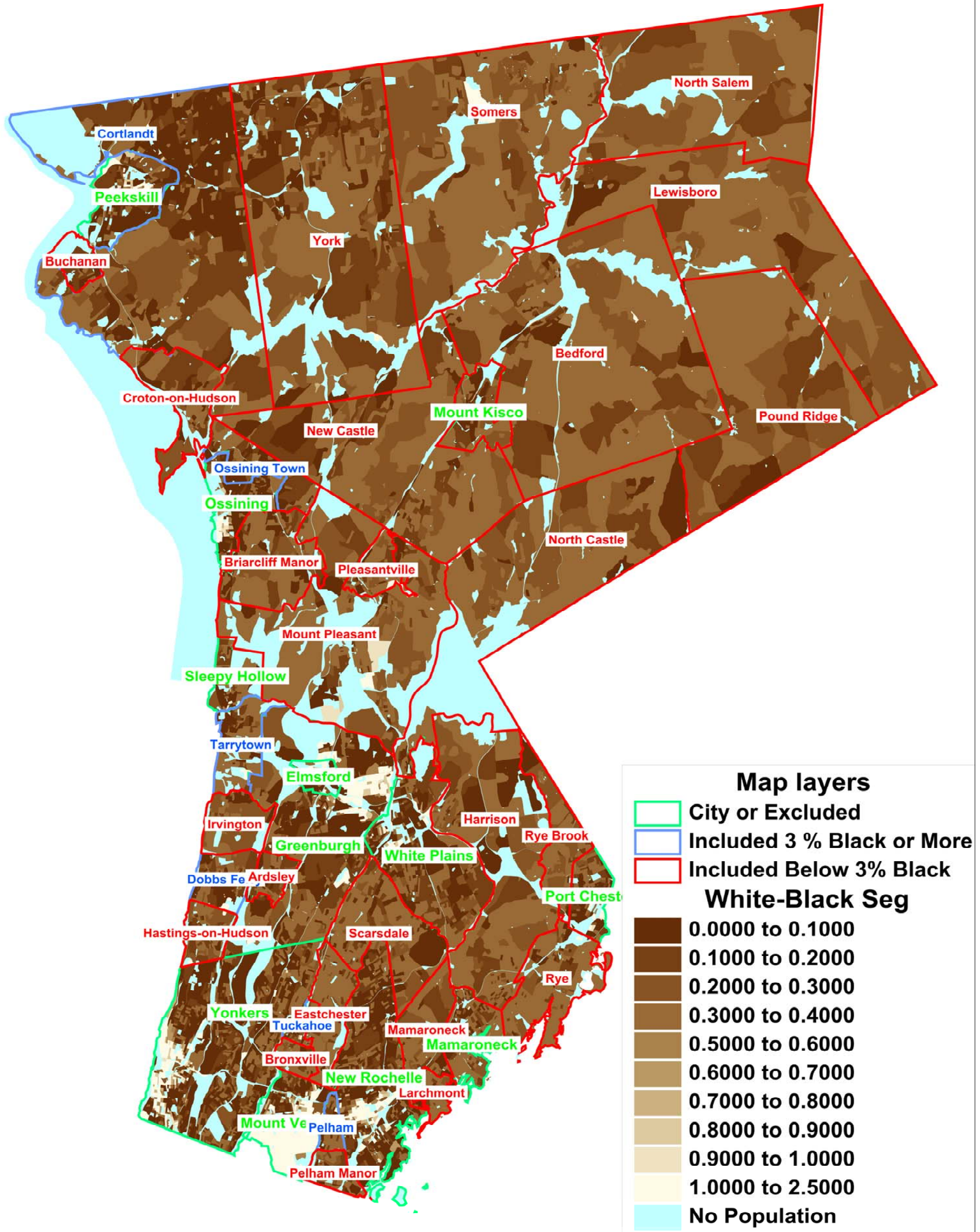
Volunteer, Friends of Terence Zaleski, 1991.

<b>Exhibit 2. Classification of Municipalities in Westchester County for Consent Decree</b>							
<b>Name</b>	<b>Status</b>	<b>Total Householder</b>	<b>Non-Hispanic White Householder</b>	<b>Non-Hispanic Black Householder</b>	<b>Non-Hispanic Asian Householder</b>	<b>Non-Hispanic Other Householder</b>	<b>Hispanic Householder</b>
Mount Vernon city	<b>City</b>	26,260	6,138	15,703	450	1,032	2,937
New Rochelle city	<b>City</b>	27,953	15,510	5,235	1,080	427	5,701
White Plains city	<b>City</b>	22,910	13,312	3,182	1,493	358	4,565
Yonkers city	<b>City</b>	74,550	36,957	12,423	3,534	1,290	20,346
Elmsford village	<b>Excluded</b>	1,618	640	346	176	32	424
Greenburgh town uninc	<b>Excluded</b>	16,424	10,235	2,799	1,666	242	1,482
Mamaroneck village	<b>Excluded</b>	6,998	5,110	302	292	88	1,206
Mount Kisco town	<b>Excluded</b>	4,102	2,710	219	174	45	954
Ossining village	<b>Excluded</b>	8,344	4,178	1,163	375	108	2,520
Peekskill city	<b>Excluded</b>	9,060	4,372	2,006	215	173	2,294
Port Chester village	<b>Excluded</b>	9,240	4,120	638	191	118	4,173
Sleepy Hollow village	<b>Excluded</b>	3,462	1,746	201	106	27	1,382
Cortlandt town uninc	<b>Included</b>	11,202	9,053	622	341	117	1,069
Dobbs Ferry village	<b>Included</b>	3,901	3,115	182	281	41	282
Ossining town uninc	<b>Included</b>	1,931	1,584	70	90	10	177
Pelham village	<b>Included</b>	2,390	1,771	218	129	44	228
Tarrytown village	<b>Included</b>	4,410	3,174	279	259	51	647
Tuckahoe village	<b>Included</b>	2,855	2,103	295	175	36	246
Ardsley village	<b>Included</b>	1,587	1,271	27	196	11	82
Bedford town	<b>Included</b>	5,765	4,940	116	139	50	520
Briarcliff Manor village	<b>Included</b>	2,647	2,344	45	160	16	82
Bronxville village	<b>Included</b>	2,259	2,052	15	102	15	75
Buchanan village	<b>Included</b>	829	711	22	9	6	81
Croton-on-Hudson village	<b>Included</b>	2,956	2,511	58	98	34	255
Eastchester town uninc	<b>Included</b>	7,832	6,801	88	492	65	386
Harrison town	<b>Included</b>	8,375	7,070	55	452	81	717
Hastings-on-Hudson village	<b>Included</b>	3,027	2,589	71	127	43	197
Irvington village	<b>Included</b>	2,528	2,204	32	155	17	120
Larchmont village	<b>Included</b>	2,109	1,888	38	49	12	122
Lewisboro town	<b>Included</b>	4,453	4,106	52	97	41	157
Mamaroneck town uninc	<b>Included</b>	4,510	3,956	86	167	45	256
Mount Pleasant town uninc	<b>Included</b>	8,059	7,110	82	403	60	404
New Castle town	<b>Included</b>	5,786	5,106	74	388	39	179
North Castle town	<b>Included</b>	3,913	3,412	54	175	27	245
North Salem town	<b>Included</b>	1,811	1,661	16	19	15	100
Pelham Manor village	<b>Included</b>	1,857	1,633	36	70	22	96
Pleasantville village	<b>Included</b>	2,569	2,216	22	102	15	214
Pound Ridge town	<b>Included</b>	1,844	1,723	21	32	13	55
Rye Brook village	<b>Included</b>	3,461	2,983	51	129	30	268
Rye city	<b>Included</b>	5,520	4,849	79	275	40	277
Scarsdale town	<b>Included</b>	5,418	4,536	60	635	48	139
Somers town	<b>Included</b>	7,623	7,079	67	193	55	229
Yorktown town	<b>Included</b>	12,884	11,075	334	501	97	877
<b>All 25 Under-3 Municipalities</b>		<b>109,622</b>	<b>95,826</b>	<b>1,601</b>	<b>5,165</b>	<b>897</b>	<b>6,133</b>

<b>Exhibit 2. Classification of Municipalities in Westchester County for Consent Decree (Continued)</b>								
<b>Name</b>	<b>Non-Hispanic White Householder</b>	<b>Non-Hispanic Black Householder</b>	<b>Non-Hispanic Asian Houesholder</b>	<b>Non-Hispanic Other Householder</b>	<b>Hispanic Householder</b>	<b>MUN</b>	<b>Muni &lt;3% NH Black</b>	<b>% Black Population in Households</b>
Mount Vernon city	23.4%	59.8%	1.7%	3.9%	11.2%	MTV	N	63.5%
New Rochelle city	55.5%	18.7%	3.9%	1.5%	20.4%	NRO	N	18.7%
White Plains city	58.1%	13.9%	6.5%	1.6%	19.9%	WHP	N	13.4%
Yonkers city	49.6%	16.7%	4.7%	1.7%	27.3%	YON	N	18.5%
Elmsford village	39.6%	21.4%	10.9%	2.0%	26.2%	ELM	N	21.2%
Greenburgh town uninc	62.3%	17.0%	10.1%	1.5%	9.0%	GRB	N	18.7%
Mamaroneck village	73.0%	4.3%	4.2%	1.3%	17.2%	MMV	N	4.2%
Mount Kisco town	66.1%	5.3%	4.2%	1.1%	23.3%	MTK	N	5.2%
Ossining village	50.1%	13.9%	4.5%	1.3%	30.2%	OSV	N	13.3%
Peekskill city	48.3%	22.1%	2.4%	1.9%	25.3%	PKS	N	23.4%
Port Chester village	44.6%	6.9%	2.1%	1.3%	45.2%	PCH	N	6.4%
Sleepy Hollow village	50.4%	5.8%	3.1%	0.8%	39.9%	SLH	N	6.1%
Cortlandt town uninc	80.8%	5.6%	3.0%	1.0%	9.5%	CTD	N	5.9%
Dobbs Ferry village	79.9%	4.7%	7.2%	1.1%	7.2%	DBF	N	4.3%
Ossining town uninc	82.0%	3.6%	4.7%	0.5%	9.2%	OST	N	4.3%
Pelham village	74.1%	9.1%	5.4%	1.8%	9.5%	PEL	N	9.4%
Tarrytown village	72.0%	6.3%	5.9%	1.2%	14.7%	TTN	N	6.8%
Tuckahoe village	73.7%	10.3%	6.1%	1.3%	8.6%	TUC	N	11.2%
Ardsley village	80.1%	1.7%	12.4%	0.7%	5.2%	ARD	Y	2.2%
Bedford town	85.7%	2.0%	2.4%	0.9%	9.0%	BED	Y	2.1%
Briarcliff Manor village	88.6%	1.7%	6.0%	0.6%	3.1%	BRM	Y	1.8%
Bronxville village	90.8%	0.7%	4.5%	0.7%	3.3%	BXV	Y	0.5%
Buchanan village	85.8%	2.7%	1.1%	0.7%	9.8%	BUC	Y	2.9%
Croton-on-Hudson village	84.9%	2.0%	3.3%	1.2%	8.6%	CRO	Y	2.4%
Eastchester town uninc	86.8%	1.1%	6.3%	0.8%	4.9%	ECH	Y	1.2%
Harrison town	84.4%	0.7%	5.4%	1.0%	8.6%	HAR	Y	1.0%
Hastings-on-Hudson village	85.5%	2.3%	4.2%	1.4%	6.5%	HAS	Y	2.8%
Irvington village	87.2%	1.3%	6.1%	0.7%	4.7%	IRV	Y	1.4%
Larchmont village	89.5%	1.8%	2.3%	0.6%	5.8%	LAR	Y	1.5%
Lewisboro town	92.2%	1.2%	2.2%	0.9%	3.5%	LEW	Y	1.2%
Mamaroneck town uninc	87.7%	1.9%	3.7%	1.0%	5.7%	MMT	Y	1.8%
Mount Pleasant town uninc	88.2%	1.0%	5.0%	0.7%	5.0%	MTP	Y	1.0%
New Castle town	88.2%	1.3%	6.7%	0.7%	3.1%	NWC	Y	1.4%
North Castle town	87.2%	1.4%	4.5%	0.7%	6.3%	NOC	Y	1.6%
North Salem town	91.7%	0.9%	1.0%	0.8%	5.5%	NSM	Y	1.1%
Pelham Manor village	87.9%	1.9%	3.8%	1.2%	5.2%	PMR	Y	1.7%
Pleasantville village	86.3%	0.9%	4.0%	0.6%	8.3%	PLV	Y	1.1%
Pound Ridge town	93.4%	1.1%	1.7%	0.7%	3.0%	PDR	Y	1.1%
Rye Brook village	86.2%	1.5%	3.7%	0.9%	7.7%	RYB	Y	1.5%
Rye city	87.8%	1.4%	5.0%	0.7%	5.0%	RYC	Y	1.2%
Scarsdale town	83.7%	1.1%	11.7%	0.9%	2.6%	SCD	Y	1.3%
Somers town	92.9%	0.9%	2.5%	0.7%	3.0%	SOM	Y	0.9%
Yorktown town	86.0%	2.6%	3.9%	0.8%	6.8%	YTN	Y	2.9%
<b>All 25 Under-3 Municipalities</b>	<b>87.4%</b>	<b>1.5%</b>	<b>4.7%</b>	<b>0.8%</b>	<b>5.6%</b>			



### Exhibit 3. Segregation by Census Block in Municipalities in Westchester. Divergence Index, White-Black Segregation (based upon 2010 Census).



**Exhibit 4. Analysis of Contributions of Various Areas of Westchester County to Overall Segregation Levels, 2010 Census Blocks****Racial Residential Segregation in Areas within Westchester County, NY**

Status	Population				Between-Area Segregation †	Within-Area Segregation ‡	Total Segregation §
		White	Black	Hispanic	White-Black	White-Black	White-Black
City	397,183	158,365	93,981	115,810	0.133	0.468	0.601
Excluded	164,813	73,732	20,580	57,306	0.004	0.331	0.335
Included	387,117	312,466	12,024	33,916	0.151	0.084	0.235
County	949,113	544,563	126,585	207,032	0.124	0.263	0.387

**Contribution of Each Area to the Population and Segregation in Westchester County, NY**

Status	Population				Between-Area Segregation	Within-Area Segregation	Total Segregation
	Total	White	Black	Hispanic	White-Black	White-Black	White-Black
City	41.8%	29.1%	74.2%	55.9%	40.5%	66.8%	58.4%
Excluded	17.4%	13.5%	16.3%	27.7%	0.5%	17.7%	12.2%
Included	40.8%	57.4%	9.5%	16.4%	59.1%	15.5%	29.4%
County	100.0%	100.0%	100.0%	100.0%	100.0%	100.0%	100.0%

† Between-Area Segregation -- how surprising is the racial composition of each area given the county's overall racial composition?

‡ Within-Area Segregation -- how surprising is the racial composition of blocks within each area given the area's overall racial composition?

§ Total Segregation -- sum of the between-area segregation and the average within-area segregation. Total county-level segregation is a weighted average of the area totals.

Analysis by Elizabeth Roberto, Ph.D., James S. McDonell Foundation Postdoctoral Fellow, Department of Sociology, Princeton University  
<http://www.elizabethroberto.com/>

<b>Exhibit 5: Median Sales Prices of Single-Family Homes Calculated from Last 12 months of Redfin Listings, 25 Under-3 Jurisdictions</b>			
<b>Under \$600,000</b>			
Buchanan	Croton-on-Hudson	North Salem	Pleasantville
Somers	Yorktown		
<b>Under \$800,000</b>			
Ardsley	Bedford	Eastchester	Lewisboro
Mount Pleasant	Pound Ridge		
<b>Under \$1 million</b>			
Briarcliff Manor	Hastings-on-Hudson	New Castle	North Castle
Pelham Manor	Rye Brook		
<b>Over \$1 million</b>			
Bronxville	Harrison	Irvington	Larchmont
Mamaroneck Town	Rye	Scarsdale	

**Exhibit 6. Analysis of Differences in Housing Affordability by Race and Hispanic Householder for Westchester County and the Region Including Westchester, Rockland, and Putnam Counties (NY), New York City, and Fairfield County (CT)**

<b>Westchester County</b>					
<i>Affordability Levels</i>	Total Householders	White NH Householders	Black NH Householders	Other NH Householders	Hispanic Householders
Total Households (HH)	340,194	210,960	45,395	21,209	62,629
40 to 60% of Area Median Income	24,723	12,291	3,902	1,326	7,204
60 to 80% of Area Median Income	33,116	18,008	6,189	1,390	7,529
\$400 to \$600K House Affordable	36,091	23,792	3,772	2,840	5,687
\$600 to \$800K House Affordable	25,663	18,908	1,884	1,987	2,883
\$800 to \$1m House Affordable	10,259	7,798	943	692	826
\$1M Plus House Affordable	65,230	53,774	2,818	5,588	3,049
All 25 Under-3 Municipalities	109,622	95,826	1,601	6,062	6,133
<b>Distribution of Each Group's Households Across Income Levels for Disparate Impact Analysis</b>					
<i>Affordability Levels</i>	Total Householders	White NH Householders	Black NH Householders	Other NH Householders	Hispanic Householders
Total Households (HH)	100.0%	100.0%	100.0%	100.0%	100.0%
40 to 60% of Area Median Income	7.3%	5.8%	8.6%	6.3%	11.5%
60 to 80% of Area Median Income	9.7%	8.5%	13.6%	6.6%	12.0%
\$400 to \$600K House Affordable	10.6%	11.3%	8.3%	13.4%	9.1%
\$600 to \$800K House Affordable	7.5%	9.0%	4.2%	9.4%	4.6%
\$800 to \$1m House Affordable	3.0%	3.7%	2.1%	3.3%	1.3%
\$1M Plus House Affordable	19.2%	25.5%	6.2%	26.3%	4.9%
All 25 Under-3 Municipalities	32.2%	45.4%	3.5%	28.6%	9.8%
<b>Distribution of Each Income Band Across Race/ Hispanic Groups for Perpetuation of Segregation Analysis</b>					
<i>Affordability Levels</i>	Total Householders	White NH Householders	Black NH Householders	Other NH Householders	Hispanic Householders
Total Households (HH)	100.0%	62.0%	13.3%	6.2%	18.4%
40 to 60% of Area Median Income	100.0%	49.7%	15.8%	5.4%	29.1%
60 to 80% of Area Median Income	100.0%	54.4%	18.7%	4.2%	22.7%
\$400 to \$600K House Affordable	100.0%	65.9%	10.5%	7.9%	15.8%
\$600 to \$800K House Affordable	100.0%	73.7%	7.3%	7.7%	11.2%
\$800 to \$1m House Affordable	100.0%	76.0%	9.2%	6.7%	8.1%
\$1M Plus House Affordable	100.0%	82.4%	4.3%	8.6%	4.7%
All 25 Under-3 Municipalities	100.0%	87.4%	1.5%	5.5%	5.6%

**Exhibit 6. Analysis of Differences in Housing Affordability by Race and Hispanic Householder for Westchester County and the Region Including Westchester, Rockland, and Putnam Counties (NY), New York City, and Fairfield County (CT) (Continued)**

**Westchester, Rockland, and Putnam Counties (NY), New York City, and Fairfield County (CT)**

<i>Affordability Levels</i>	Total Householders	White NH Householders	Black NH Householders	Other NH Householders	Hispanic Householders
Total Households (HH)	3,739,840	1,643,868	744,344	480,374	871,254
40 to 60% of Area Median Income	286,972	100,338	69,553	36,301	80,780
60 to 80% of Area Median Income	397,619	157,020	93,149	49,898	97,552
\$400 to \$600K House Affordable	330,368	181,355	53,436	44,652	50,925
\$600 to \$800K House Affordable	214,650	129,797	27,800	29,543	27,510
\$800 to \$1m House Affordable	70,678	44,626	8,416	10,595	7,040
\$1M Plus House Affordable	391,495	298,248	20,882	47,620	24,744

**Distribution of Each Group's Households Across Income Levels for Disparate Impact Analysis**

<i>Affordability Levels</i>	Total Householders	White NH Householders	Black NH Householders	Other NH Householders	Hispanic Householders
Total Households (HH)	100.0%	100.0%	100.0%	100.0%	100.0%
40 to 60% of Area Median Income	7.7%	6.1%	9.3%	7.6%	9.3%
60 to 80% of Area Median Income	10.6%	9.6%	12.5%	10.4%	11.2%
\$400 to \$600K House Affordable	8.8%	11.0%	7.2%	9.3%	5.8%
\$600 to \$800K House Affordable	5.7%	7.9%	3.7%	6.1%	3.2%
\$800 to \$1m House Affordable	1.9%	2.7%	1.1%	2.2%	0.8%
\$1M Plus House Affordable	10.5%	18.1%	2.8%	9.9%	2.8%

**Distribution of Each Income Band Across Race/ Hispanic Groups for Perpetuation of Segregation Analysis**

<i>Affordability Levels</i>	Total Householders	White NH Householders	Black NH Householders	Other NH Householders	Hispanic Householders
Total Households (HH)	100.0%	44.0%	19.9%	12.8%	23.3%
40 to 60% of Area Median Income	100.0%	35.0%	24.2%	12.6%	28.1%
60 to 80% of Area Median Income	100.0%	39.5%	23.4%	12.5%	24.5%
\$400 to \$600K House Affordable	100.0%	54.9%	16.2%	13.5%	15.4%
\$600 to \$800K House Affordable	100.0%	60.5%	13.0%	13.8%	12.8%
\$800 to \$1m House Affordable	100.0%	63.1%	11.9%	15.0%	10.0%
\$1M Plus House Affordable	100.0%	76.2%	5.3%	12.2%	6.3%

**Exhibit 7. Comparison of Ratios of Non-Hispanic Black Householders with Incomes of 40 to 60% and 60 to 80% of Area Median Incomes with Current Residents in All 25 Under-3 Municipalities**

	Ratio % NH Black HHs at 40 to 60% of Area Median Income to % of Current Residents	Ratio of Black HHs at 60 to 80% of Area Median Income to % of Current Residents	Ratio % NH Black HHs at 40 to 60% of Area Median Income to % of Current Residents	Ratio of Black HHs at 60 to 80% of Area Median Income to % of Current Residents
<b>All 25 Under-3 Municipalities</b>	<b>10.8</b>	<b>12.8</b>	<b>16.6</b>	<b>16.0</b>
<b>Ardsley village</b>	<b>9.3</b>	<b>11.0</b>	<b>14.2</b>	<b>13.8</b>
<b>Bedford town</b>	<b>7.8</b>	<b>9.3</b>	<b>12.0</b>	<b>11.6</b>
<b>Briarcliff Manor village</b>	<b>9.3</b>	<b>11.0</b>	<b>14.3</b>	<b>13.8</b>
<b>Bronxville village</b>	<b>23.8</b>	<b>28.1</b>	<b>36.5</b>	<b>35.3</b>
<b>Buchanan village</b>	<b>5.9</b>	<b>7.0</b>	<b>9.1</b>	<b>8.8</b>
<b>Croton-on-Hudson village</b>	<b>8.0</b>	<b>9.5</b>	<b>12.4</b>	<b>11.9</b>
<b>Eastchester town uninc</b>	<b>14.0</b>	<b>16.6</b>	<b>21.6</b>	<b>20.8</b>
<b>Harrison town</b>	<b>24.0</b>	<b>28.5</b>	<b>36.9</b>	<b>35.7</b>
<b>Hastings-on-Hudson village</b>	<b>6.7</b>	<b>8.0</b>	<b>10.3</b>	<b>10.0</b>
<b>Irvington village</b>	<b>12.5</b>	<b>14.8</b>	<b>19.1</b>	<b>18.5</b>
<b>Larchmont village</b>	<b>8.8</b>	<b>10.4</b>	<b>13.5</b>	<b>13.0</b>
<b>Lewisboro town</b>	<b>13.5</b>	<b>16.0</b>	<b>20.8</b>	<b>20.1</b>
<b>Mamaroneck town uninc</b>	<b>8.3</b>	<b>9.8</b>	<b>12.7</b>	<b>12.3</b>
<b>Mount Pleasant town uninc</b>	<b>15.5</b>	<b>18.4</b>	<b>23.8</b>	<b>23.0</b>
<b>New Castle town</b>	<b>12.3</b>	<b>14.6</b>	<b>19.0</b>	<b>18.3</b>
<b>North Castle town</b>	<b>11.4</b>	<b>13.5</b>	<b>17.6</b>	<b>17.0</b>
<b>North Salem town</b>	<b>17.9</b>	<b>21.2</b>	<b>27.4</b>	<b>26.5</b>
<b>Pelham Manor village</b>	<b>8.1</b>	<b>9.6</b>	<b>12.5</b>	<b>12.1</b>
<b>Pleasantville village</b>	<b>18.4</b>	<b>21.8</b>	<b>28.3</b>	<b>27.4</b>
<b>Pound Ridge town</b>	<b>13.9</b>	<b>16.4</b>	<b>21.3</b>	<b>20.6</b>
<b>Rye Brook village</b>	<b>10.7</b>	<b>12.7</b>	<b>16.4</b>	<b>15.9</b>
<b>Rye city</b>	<b>11.0</b>	<b>13.1</b>	<b>16.9</b>	<b>16.4</b>
<b>Scarsdale town</b>	<b>14.3</b>	<b>16.9</b>	<b>21.9</b>	<b>21.2</b>
<b>Somers town</b>	<b>18.0</b>	<b>21.3</b>	<b>27.6</b>	<b>26.7</b>
<b>Yorktown town</b>	<b>6.1</b>	<b>7.2</b>	<b>9.3</b>	<b>9.0</b>

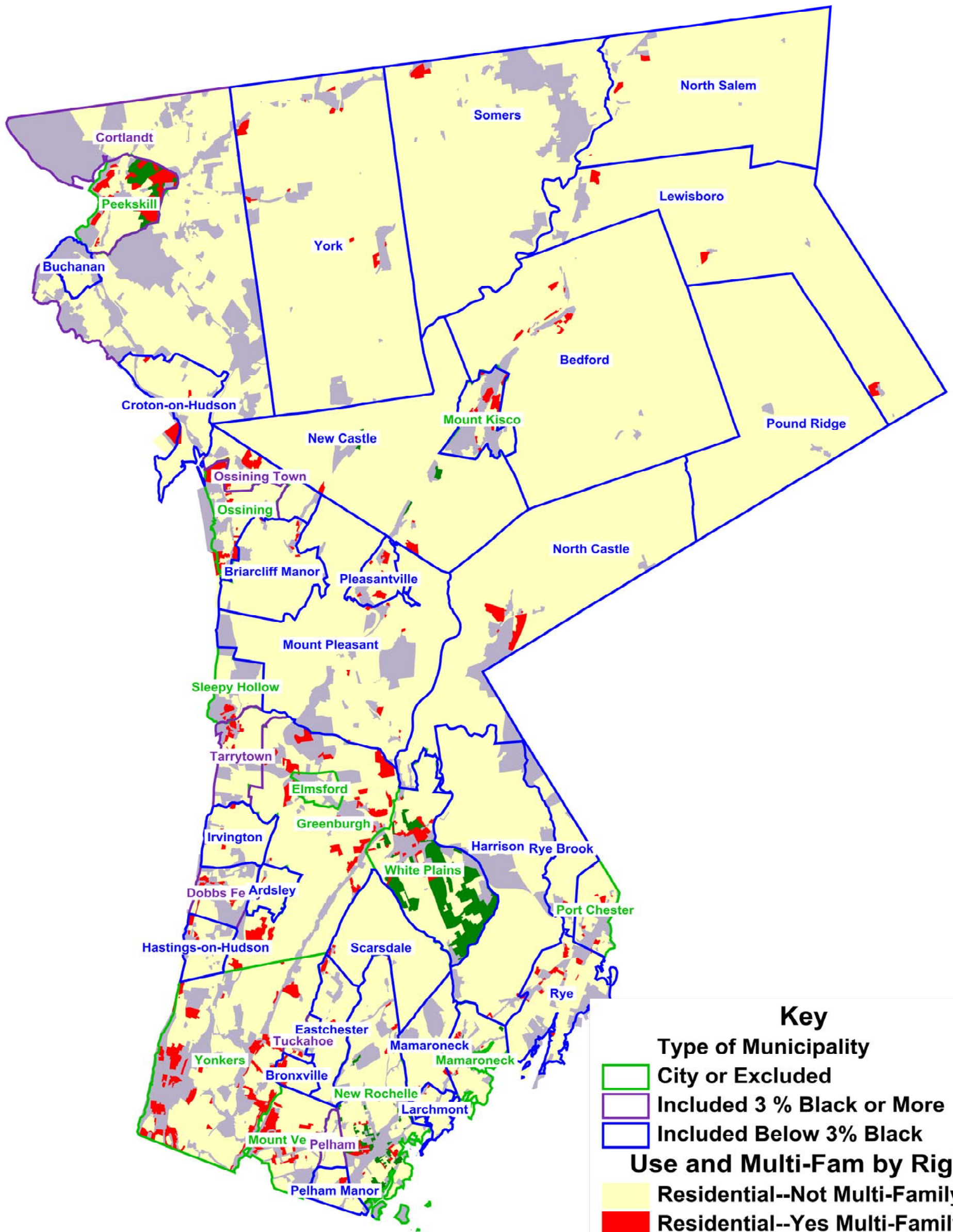
**Exhibit 8A. Comparison of Ratios of Percent of Non-Hispanic Black Householders at various Income Levels**

	Westchester County		Westchester, Rockland, Putnam and New York City and Fairfield County (CT)	
Within Area Comparison	Ratio % NH Black HHs at 40 to 60% of Area Median Income to % NH Black HHs at Various Housing Cost Affordability Levels	Ratio of Black HHs at 60 to 80% of Area Median Income to % NH Black HHs at Various Housing Cost Affordability Levels	Ratio % NH Black HHs at 40 to 60% of Area Median Income to % NH Black HHs at Various Housing Cost Affordability Levels	Ratio of Black HHs at 60 to 80% of Area Median Income to % NH Black HHs at Various Housing Cost Affordability Levels
\$400 to \$600K House Affordable	1.5	1.8	1.5	1.4
\$600 to \$800K House Affordable	2.2	2.5	1.9	1.8
\$800 to \$1m House Affordable	1.7	2.0	2.0	2.0
\$1M Plus House Affordable	3.7	4.3	4.5	4.4
Comparison between HHs in Region that Meet AMI band with HHs in Westchester that Meet Various Cost Affordability Levels	Ratio % NH Black HHs at 40 to 60% of Area Median Income to % NH Black HHs at Various Housing Cost Affordability Levels	Ratio of Black HHs at 60 to 80% of Area Median Income to % NH Black HHs at Various Housing Cost Affordability Levels		
\$400 to \$600K House Affordable	2.3	2.2		
\$600 to \$800K House Affordable	3.3	3.2		
\$800 to \$1m House Affordable	2.6	2.5		
\$1M Plus House Affordable	5.6	5.4		

**Exhibit 8B. Comparisons of Ratios of Percent of Non-Hispanic Black Householders who Can Afford Housing at Various Income Levels with Percent of Non-Hispanic White Householders at each such Level for Disparate Impact Analysis**

	Westchester County	Westchester, Rockland, Putnam and New York City and Fairfield County (CT)
40 to 60% of Area Median Income	1.5	1.5
60 to 80% of Area Median Income	1.6	1.3
\$400 to \$600K House Affordable	0.7	0.7
\$600 to \$800K House Affordable	0.5	0.5
\$800 to \$1m House Affordable	0.6	0.4
\$1M Plus House Affordable	0.2	0.2

# Exhibit 9. Zoning and Principal Use for all Zoning Areas in Westchester County. Based Upon 2015 Zoning Map



### Key

**Type of Municipality**

- City or Excluded
- Included 3 % Black or More
- Included Below 3% Black

**Use and Multi-Fam by Right**

- Residential--Not Multi-Family
- Residential--Yes Multi-Family
- Other Use, Including Mixed
- Not Residential



Status	MUN	Description	Muni Densy (HH per acre)	Muni <3% NH Black	Muni NH black pop	% Black (Hispanic and Non-Hispanic) HH	% HH Princ Res and MF Yes	% HH Princ res, MF Yes who are NH Black	% acres Princ Res and MF Yes	% HH Princ Res and MF No	% HH Princ res, MF No who are NH Black	% acres Princ Res and MF No	Classifica tion of highest % NH Black	% HH highest classifficai ton NH Black	Highest % NH Black	% Acres highest classifficai ton NH Black	NH Black: highest classifica tion / PR, N	Ratio of Princ Res, MF N acres to Princ Res MF Y acres	% Affordab le Housing allocatio n built	Land Use: Res MF acreage as % of all res units
City	YON	Yonkers City	23.56	N	15.9%	18.47%	24.1%	20.1%	6.8%	40.0%	7.7%	63.7%	PN, Y	0.3%	33.3%	1.3%	432.5%	9.37		16.42%
City	NRO	New Rochelle City	26.62	N	17.9%	18.69%	26.1%	20.7%	6.2%	50.9%	15.5%	42.8%	M, Y	7.2%	29.2%	10.7%	188.4%	6.90		8.41%
City	MTV	Mount Vernon City	21.34	N	61.3%	63.54%	32.2%	52.1%	2.7%	52.2%	61.9%	73.3%	NR	14.9%	68.6%	23.1%	110.8%	27.15		12.18%
City	WHP	White Plains City	8.15	N	12.8%	13.40%	35.2%	17.0%	4.0%	48.7%	9.7%	76.9%	PN, Y	12.4%	20.1%	8.8%	207.2%	19.23		9.80%
Excluded	MMV	Mamaroneck Village	6.29	N	3.6%	4.16%	12.5%	6.9%	2.8%	68.4%	3.6%	75.3%	NR	2.0%	8.7%	14.8%	241.7%	26.89		6.15%
Excluded	ELM	Elmsford Village	3.92	N	19.7%	21.21%	16.1%	19.4%	7.2%	55.8%	20.7%	38.3%	NR	12.0%	28.7%	47.8%	138.6%	5.32		13.88%
Excluded	GRB	Greenburgh Uninc	5.77	N	17.7%	18.74%	21.1%	18.1%	7.9%	63.5%	15.0%	54.4%	PN, N	3.0%	29.9%	11.6%	199.3%	6.89		11.57%
Excluded	PCH	Portchester Village	12.12	N	5.2%	6.39%	22.2%	11.0%	6.5%	61.0%	4.9%	66.1%	NR	9.9%	11.2%	18.1%	228.6%	10.17		10.45%
Excluded	OSV	Ossining Village	8.19	N	12.4%	13.34%	23.0%	10.6%	7.4%	61.3%	12.0%	22.2%	PN, Y	13.4%	26.7%	37.9%	222.5%	3.00		11.19%
Excluded	MTK	Mount Kisco Town	4.68	N	4.6%	5.21%	31.3%	8.3%	3.3%	39.3%	2.6%	22.3%	PR, Y	31.3%	8.3%	3.3%	319.2%	6.76		10.33%
Excluded	SLH	Sleepy Hollow Village	4.81	N	4.4%	6.14%	31.5%	10.3%	2.4%	28.7%	1.4%	49.4%	PR, Y	31.5%	10.3%	2.4%	735.7%	20.58		5.76%
Excluded	PKS	Peekskill Town	10.34	N	21.4%	23.39%	32.3%	20.0%	16.6%	52.0%	21.0%	34.7%	NR	2.8%	33.9%	31.2%	161.4%	2.09		14.05%
Included	CTD	Cortland Uninc	3.34	N	4.40%	5.94%	0.0%	0.0%	0.0%	84.5%	5.7%	67.3%	M, Y	1.2%	8.5%	5.1%	149.1%	-	50.6%	1.98%
Included	PEL	Pelham Town Uninc	5.83	N	9.00%	9.38%	4.9%	14.9%	1.7%	77.8%	7.3%	88.9%	PN, N	4.8%	29.2%	3.2%	400.0%	52.29	4.1%	2.29%
Included	OST	Ossining Town Uninc	1.74	N	3.50%	4.26%	21.4%	3.5%	2.3%	72.8%	3.8%	81.5%	PR, N	72.8%	3.8%	81.5%	100.0%	35.43	7.1%	1.07%
Included	DBF	Dobbs Ferry Village	4.12	N	4.60%	4.34%	26.1%	4.2%	6.7%	44.1%	3.1%	33.6%	M, Y	20.2%	9.8%	36.4%	316.1%	5.01	10.5%	12.00%
Included	TUC	Tuckahoe Village	15.37	N	10.20%	11.19%	30.8%	16.2%	7.0%	53.6%	5.8%	50.5%	M, N	2.7%	48.1%	4.9%	829.3%	7.21	10.7%	12.67%
Included	TTN	Tarrytown Town	3.81	N	6.00%	6.83%	33.5%	9.6%	5.3%	43.0%	3.2%	73.0%	M, Y	3.9%	17.8%	0.1%	556.3%	13.77	60.4%	29.87%
Included	PDR	Pound Ridge Village	0.40	Y	1.2%	1.10%	0.0%	0.0%	0.0%	99.0%	1.1%	98.1%	PN, Y	0.6%	1.7%	0.8%	154.5%	-	6.5%	0.00%
Included	BUC	Buchanan Village	1.01	Y	2.80%	2.89%	0.0%	0.0%	0.0%	84.2%	2.6%	37.2%	NR	7.2%	3.9%	60.4%	150.0%	-	3.6%	1.41%
Included	SOM	Somers Town	0.58	Y	1.0%	0.87%	0.2%	0.0%	0.6%	68.3%	0.9%	82.5%	PN, Y	1.1%	1.4%	0.9%	155.6%	137.50	78.1%	0.00%
Included	ARD	Ardsey Village	2.86	Y	2.00%	2.23%	0.6%	1.3%	1.0%	93.6%	1.6%	90.6%	PN, N	3.1%	3.9%	4.4%	243.8%	90.60	19.0%	1.03%
Included	NSM	North Salem Town	0.15	Y	1.2%	1.05%	0.8%	0.2%	0.2%	96.1%	0.7%	98.6%	PN, N	2.3%	8.2%	1.1%	1171.4%	493.00	50.0%	0.08%
Included	SCD	Scarsdale Town	3.67	Y	1.40%	1.26%	1.9%	1.2%	0.9%	97.4%	1.1%	97.7%	NR	0.8%	3.0%	1.3%	272.7%	108.56	3.1%	0.26%
Included	RYB	Rye Brook Village	2.20	Y	1.40%	1.49%	2.3%	0.1%	1.0%	89.5%	1.5%	75.8%	M, Y	1.5%	3.6%	1.3%	240.0%	75.80	48.0%	1.29%
Included	MTP	Mount Pleasant Uninc	0.98	Y	1.2%	1.00%	3.0%	1.0%	0.7%	89.9%	0.9%	89.1%	PN, N	3.9%	2.2%	5.2%	244.4%	127.29	0.0%	0.12%
Included	HAR	Harrison Town	1.25	Y	0.9%	0.97%	3.5%	0.2%	0.2%	89.3%	0.9%	87.2%	M, Y	2.0%	3.0%	0.0%	333.3%	436.00	0.4%	0.62%
Included	NOC	North Castle Town	0.45	Y	1.50%	1.61%	3.5%	0.2%	2.8%	91.8%	1.4%	85.8%	M, Y	1.8%	4.2%	0.3%	300.0%	30.64	7.9%	0.04%
Included	NWC	New Castle Town	0.59	Y	1.40%	1.38%	4.1%	2.2%	0.9%	92.2%	1.1%	96.9%	PN, Y	2.6%	4.8%	0.8%	436.4%	107.67	13.7%	0.01%
Included	PLV	Pleasantville Village	3.36	Y	1.1%	1.14%	5.6%	0.7%	1.4%	82.1%	0.6%	81.5%	PN, N	2.8%	4.7%	5.1%	783.3%	58.21	51.2%	2.25%
Included	LAR	Larchmont Village	4.95	Y	1.30%	1.45%	5.8%	3.7%	1.0%	72.8%	0.5%	92.8%	PN, Y	20.0%	6.5%	5.3%	1300.0%	92.80	48.6%	0.95%
Included	YTN	Yorktown City	0.97	Y	2.70%	2.94%	5.9%	3.5%	0.1%	90.6%	2.5%	93.8%	PN, N	0.5%	5.7%	1.3%	228.0%	938.00	49.5%	4.22%
Included	CRO	Croton Village	1.66	Y	2.40%	2.41%	6.0%	4.7%	7.3%	86.6%	1.8%	77.0%	PR, Y	6.0%	4.7%	7.3%	261.1%	10.55	15.7%	1.63%
Included	BRM	Briarcliff Manor Village	1.02	Y	2.20%	1.75%	6.3%	0.8%	0.5%	87.4%	1.9%	96.9%	NR	4.7%	2.3%	2.1%	121.1%	193.80	34.8%	1.01%
Included	BED	Bedford Town	0.29	Y	1.90%	2.06%	6.4%	3.8%	0.2%	89.2%	1.7%	99.2%	PN, Y	2.2%	6.9%	0.3%	405.9%	496.00	28.3%	0.35%
Included	LEW	Lewisboro Town	1.45	Y	1.2%	1.24%	6.8%	2.1%	1.7%	90.5%	1.1%	90.2%	PN, Y	2.7%	2.7%	8.1%	245.5%	53.06	2.1%	0.12%
Included	MMT	Mamaroneck Town Uninc	3.85	Y	1.80%	1.77%	11.7%	2.8%	1.6%	76.6%	1.8%	70.6%	PN, N	0.9%	9.6%	1.0%	533.3%	44.13	8.0%	2.68%
Included	PMR	Pelham Manor Village	2.76	Y	1.90%	1.68%	12.2%	3.2%	3.6%	77.1%	1.5%	67.6%	NR	10.7%	3.8%	28.7%	253.3%	18.78	0.0%	1.65%
Included	RYC	Rye City	2.98	Y	1.30%	1.22%	13.5%	1.4%	3.9%	72.0%	1.3%	64.9%	M, Y	4.4%	5.1%	1.5%	392.3%	16.64	40.7%	4.28%
Included	IRV	Irvington Village	2.88	Y	1.40%	1.38%	16.4%	1.5%	1.7%	73.3%	1.2%	78.4%	PR, Y	16.4%	1.5%	1.7%	125.0%	46.12	2.6%	14.65%
Included	HAS	Hastings-on-Hudson Village	4.14	Y	2.80%	2.75%	18.3%	1.6%	6.7%	62.1%	2.0%	70.9%	M, Y	4.5%	7.0%	2.4%	350.0%	10.58	40.2%	6.91%
Included	ECH	Eastchester Uninc	11.02	Y	1.1%	1.20%	22.9%	1.5%	6.3%	66.4%	0.8%	85.5%	M, Y	2.5%	3.1%	1.0%	387.5%	13.57	1.9%	8.04%
Included	BXV	Bronxville Village	5.89	Y	0.8%	0.48%	36.3%	0.8%	6.9%	54.5%	0.7%	85.3%	NR	9.2%	1.1%	7.8%	157.1%	12.36	0.0%	6.83%











Status	MUN	Description	Principal Use	Multi Family_as_of_Right	All Households	pct_hhd	NH White Householder	pct_tot_nh_wht	NH Black Householder	pct_tot_nh_blk	NH Asian Householder	pct_tot_nh_asn	Hispanic Householder	pct_tot_hispanic	Total Population	pct_totpop	Acres	pct_acres	Household Population	Hhd_Pop_of_totpop
Included	YTN	Yorktown City	Principally Residential	No	11,678	0.906	10,090	0.91	291	0.87	448	0.902	764	0.871	33,229	0.92	12,487	0.938	32,778	0.986
		Yorktown City	Principally Residential	Yes	763	0.059	615	0.055	27	0.081	37	0.075	70	0.08	1,630	0.045	8	0.001	1,630	1
		Yorktown City	Exclusively Non-Residential	No	344	0.027	287	0.026	13	0.037	10	0.02	33	0.037	885	0.025	546	0.041	841	0.951
		Yorktown City	Principally Non-Residential	No	70	0.005	54	0.005	4	0.012	2	0.004	9	0.011	195	0.005	171	0.013	195	1
		Yorktown City	Mixed	No	38	0.003	37	0.003	0	0	0	0	1	0.001	175	0.005	94	0.007	79	0.451
Included	YTN				12,893		11,083		334		497		877		36,114		13,306		35,523	
Included					136,590		116,755		3,322		6,445		8,845		387,882		123,796		372,050	
					347,106		221,647		47,446		16,124		56,677		948,762		140,648		920,082	

Exhibit 11: Section 2 of Analysis File Regarding Principal Use and Multi-Family Zoning by Right

Status	MUN	Description	Principal_Use	All Households	pct_hhd	NH White Householder	pct_nh_wht_hh	NH Black Householder	pct_nh_blk_hh	NH Asian Householder	pct_nh_asn_hh	Hispanic Householder	pct_hisp_hh
City	MTV	Mount Vernon City	Principally Residential	13,722	0.522	3,361	0.245	8,497	0.619	210	0.015	1,166	0.085
		Mount Vernon City	Principally Residential	8,462	0.322	2,300	0.272	4,408	0.521	169	0.02	1,228	0.145
		Mount Vernon City	Exclusively Non-Residential	3,924	0.149	473	0.121	2,692	0.686	53	0.014	518	0.132
		Mount Vernon City	Unknown	118	0.004	14	0.12	80	0.677	3	0.024	16	0.134
		Mount Vernon City	Principally Non-Residential	59	0.002	21	0.352	18	0.306	6	0.106	11	0.19
City	MTV			26,285		6,169		15,694		441		2,939	

Status	MUN	Description	Principal_Use	All Households	pct_hhd	NH White Householder	pct_nh_wht_hh	NH Black Householder	pct_nh_blk_hh	NH Asian Householder	pct_nh_asn_hh	Hispanic Householder	pct_hisp_hh
City	NRO	New Rochelle City	Principally Residential	14,183	0.509	9,317	0.657	2,202	0.155	489	0.035	1,982	0.14
		New Rochelle City	Principally Residential	7,280	0.261	3,328	0.457	1,509	0.207	238	0.033	2,081	0.286
		New Rochelle City	Exclusively Non-Residential	2,318	0.083	1,209	0.521	514	0.222	68	0.029	486	0.21
		New Rochelle City	Principally Non-Residential	2,060	0.074	702	0.341	408	0.198	98	0.047	817	0.397
		New Rochelle City	Mixed	2,005	0.072	880	0.439	586	0.292	175	0.087	321	0.16
City	NRO			27,846		15,436		5,219		1,069		5,688	

Status	MUN	Description	Principal_Use	All Households	pct_hhd	NH White Householder	pct_nh_wht_hh	NH Black Householder	pct_nh_blk_hh	NH Asian Householder	pct_nh_asn_hh	Hispanic Householder	pct_hisp_hh
City	WHP	White Plains City	Principally Residential	11,135	0.487	7,428	0.667	1,085	0.097	493	0.044	1,981	0.178
		White Plains City	Principally Residential	8,059	0.352	4,151	0.515	1,370	0.17	621	0.077	1,775	0.22
		White Plains City	Principally Non-Residential	2,831	0.124	1,313	0.464	568	0.201	299	0.106	593	0.209
		White Plains City	Exclusively Non-Residential	423	0.019	182	0.43	71	0.168	45	0.107	118	0.28
		White Plains City	Mixed	414	0.018	229	0.553	71	0.171	29	0.071	79	0.19
City	WHP			22,864		13,304		3,165		1,488		4,546	

Status	MUN	Description	Principal_Use	All Households	pct_hhd	NH White Householder	pct_nh_wht_hh	NH Black Householder	pct_nh_blk_hh	NH Asian Householder	pct_nh_asn_hh	Hispanic Householder	pct_hisp_hh
City	YON	Yonkers City	Principally Residential	29,740	0.4	20,688	0.696	2,289	0.077	1,605	0.054	4,746	0.16
		Yonkers City	Mixed	19,547	0.263	6,259	0.32	4,554	0.233	643	0.033	7,685	0.393
		Yonkers City	Principally Residential	17,949	0.241	7,599	0.423	3,600	0.201	950	0.053	5,461	0.304
		Yonkers City	Exclusively Non-Residential	6,379	0.086	2,194	0.344	1,702	0.267	297	0.047	2,049	0.321
		Yonkers City	Principally Non-Residential	502	0.007	150	0.3	160	0.318	7	0.015	173	0.344
		Yonkers City	Principally Non-Residential	253	0.003	25	0.099	84	0.333	3	0.01	139	0.547
		City	YON			74,370		36,915		12,389		3,505	
City				151,365		71,824		36,466		6,503		33,426	

Status	MUN	Description	Principal_Use	All Households	pct_hhd	NH White Householder	pct_nh_wht_hh	NH Black Householder	pct_nh_blk_hh	NH Asian Householder	pct_nh_asn_hh	Hispanic Householder	pct_hisp_hh
Excluded	ELM	Elmsford Village	Principally Residential	892	0.558	384	0.43	184	0.207	46	0.052	264	0.296
		Elmsford Village	Principally Non-Residential	217	0.136	77	0.356	40	0.183	28	0.129	67	0.308
		Elmsford Village	Exclusively Non-Residential	192	0.12	61	0.318	55	0.287	28	0.145	42	0.22
		Elmsford Village	Principally Residential	257	0.161	103	0.401	50	0.194	72	0.28	25	0.097
		Elmsford Village	Principally Non-Residential	41	0.026	15	0.354	3	0.071	1	0.024	22	0.547
Excluded	ELM			1,599		640		332		175		420	

Status	MUN	Description	Principal_Use	All Households	pct_hhd	NH White Householder	pct_nh_wht_hh	NH Black Householder	pct_nh_blk_hh	NH Asian Householder	pct_nh_asn_hh	Hispanic Householder	pct_hisp_hh
Excluded	GRB	Greenburgh Uninc	Principally Residential	10,454	0.635	6,798	0.65	1,572	0.15	1,061	0.102	866	0.083
		Greenburgh Uninc	Principally Residential	3,468	0.211	2,148	0.619	626	0.181	340	0.098	297	0.086
		Greenburgh Uninc	Mixed	1,877	0.114	970	0.517	456	0.243	211	0.113	213	0.114
		Greenburgh Uninc	Principally Non-Residential	492	0.03	209	0.424	147	0.299	30	0.062	97	0.197
		Greenburgh Uninc	Exclusively Non-Residential	172	0.01	129	0.749	12	0.072	19	0.111	10	0.061
Excluded	GRB			16,462		10,253		2,815		1,662		1,484	



Status	MUN	Description	Principal_Use	All Households	pct_hhd	NH White Householder	pct_nh_wht_hh	NH Black Householder	pct_nh_blk_hh	NH Asian Householder	pct_nh_asn_hh	Hispanic Householder	pct_hisp_hh
Excluded	MMV	Mamaroneck Village	Principally Residential	4,835	0.684	3,821	0.79	173	0.036	201	0.042	579	0.12
		Mamaroneck Village	Mixed	1,213	0.171	748	0.617	65	0.054	56	0.046	328	0.27
		Mamaroneck Village	Principally Residential	885	0.125	526	0.594	61	0.069	31	0.035	255	0.289
		Mamaroneck Village	Exclusively Non-Residential	140	0.02	65	0.466	12	0.087	3	0.022	58	0.416
Excluded	MMV		7,072		5,159		312		291		1,220		

Status	MUN	Description	Principal_Use	All Households	pct_hhd	NH White Householder	pct_nh_wht_hh	NH Black Householder	pct_nh_blk_hh	NH Asian Householder	pct_nh_asn_hh	Hispanic Householder	pct_hisp_hh
Excluded	MTK	Mount Kisco Town	Principally Residential	1,597	0.393	1,106	0.692	41	0.026	49	0.031	388	0.243
		Mount Kisco Town	Principally Residential	1,270	0.313	848	0.668	105	0.083	67	0.052	231	0.182
		Mount Kisco Town	Exclusively Non-Residential	757	0.186	520	0.687	38	0.05	30	0.04	160	0.211
		Mount Kisco Town	Principally Non-Residential	438	0.108	203	0.464	33	0.074	27	0.061	173	0.394
Excluded	MTK		4,063		2,677		217		172		951		

Status	MUN	Description	Principal_Use	All Households	pct_hhd	NH White Householder	pct_nh_wht_hh	NH Black Householder	pct_nh_blk_hh	NH Asian Householder	pct_nh_asn_hh	Hispanic Householder	pct_hisp_hh
Excluded	OSV	Ossining Village	Principally Residential	5,077	0.613	2,546	0.502	610	0.12	183	0.036	1,671	0.329
		Ossining Village	Principally Residential	1,903	0.23	1,193	0.627	202	0.106	145	0.076	335	0.176
		Ossining Village	Principally Non-Residential	1,110	0.134	310	0.28	296	0.267	33	0.029	460	0.415
		Ossining Village	Exclusively Non-Residential	190	0.023	92	0.484	47	0.246	8	0.041	40	0.212
		Ossining Village	Mixed	3	0	0	0.032	2	0.677	0	0	1	0.29
Excluded	OSV		8,283		4,141		1,156		369		2,507		

Status	MUN	Description	Principal_Use	All Households	pct_hhd	NH White Householder	pct_nh_wht_hh	NH Black Householder	pct_nh_blk_hh	NH Asian Householder	pct_nh_asn_hh	Hispanic Householder	pct_hisp_hh
Excluded	PCH	Portchester Village	Principally Residential	5,612	0.61	2,747	0.489	272	0.049	121	0.022	2,407	0.429
		Portchester Village	Principally Residential	2,040	0.222	917	0.449	224	0.11	48	0.024	824	0.404
		Portchester Village	Exclusively Non-Residential	907	0.099	211	0.232	101	0.112	11	0.012	570	0.628
		Portchester Village	Principally Non-Residential	302	0.033	60	0.198	20	0.065	4	0.012	215	0.714
		Portchester Village	Principally Non-Residential	173	0.019	24	0.139	12	0.069	2	0.009	129	0.749
		Portchester Village	Mixed	167	0.018	135	0.806	8	0.048	5	0.032	17	0.103
Excluded	PCH		9,201		4,093		637		191		4,162		

Status	MUN	Description	Principal_Use	All Households	pct_hhd	NH White Householder	pct_nh_wht_hh	NH Black Householder	pct_nh_blk_hh	NH Asian Householder	pct_nh_asn_hh	Hispanic Householder	pct_hisp_hh
Excluded	PKS	Peekskill Town	Principally Residential	4,708	0.52	2,158	0.458	987	0.21	91	0.019	1,389	0.295
		Peekskill Town	Principally Residential	2,927	0.323	1,698	0.58	586	0.2	96	0.033	488	0.167
		Peekskill Town	Principally Non-Residential	1,069	0.118	345	0.323	326	0.305	19	0.018	356	0.333
		Peekskill Town	Exclusively Non-Residential	257	0.028	115	0.449	87	0.339	5	0.019	43	0.166
		Peekskill Town	Mixed	89	0.01	49	0.555	17	0.189	3	0.028	19	0.215
Excluded	PKS		9,050		4,366		2,003		213		2,294		

Status	MUN	Description	Principal_Use	All Households	pct_hhd	NH White Householder	pct_nh_wht_hh	NH Black Householder	pct_nh_blk_hh	NH Asian Householder	pct_nh_asn_hh	Hispanic Householder	pct_hisp_hh
Excluded	SLH	Sleepy Hollow Village	Principally Residential	1,077	0.315	365	0.339	111	0.103	34	0.031	560	0.52
		Sleepy Hollow Village	Principally Residential	981	0.287	828	0.844	14	0.014	39	0.04	91	0.093
		Sleepy Hollow Village	Mixed	701	0.205	129	0.184	35	0.05	12	0.017	521	0.743
		Sleepy Hollow Village	Exclusively Non-Residential	272	0.08	168	0.616	11	0.039	10	0.037	81	0.298
		Sleepy Hollow Village	Principally Non-Residential	161	0.047	65	0.402	8	0.052	5	0.029	80	0.499
		Sleepy Hollow Village	Mixed	228	0.067	183	0.803	8	0.034	3	0.014	34	0.149
Excluded	SLH		3,421		1,738		186		102		1,367		
Excluded			59,151		33,067		7,657		3,176		14,406		

Status	MUN	Description	Principal_Use	All Households	pct_hhd	NH White Householder	pct_nh_wht_hh	NH Black Householder	pct_nh_blk_hh	NH Asian Householder	pct_nh_asn_hh	Hispanic Householder	pct_hisp_hh
Included	ARD	Ardasley Village	Principally Residential	1,483	0.936	1,197	0.807	24	0.016	181	0.122	71	0.048
		Ardasley Village	Principally Non-Residential	49	0.031	25	0.524	2	0.039	12	0.255	8	0.174
		Ardasley Village	Exclusively Non-Residential	43	0.027	38	0.882	1	0.018	2	0.042	2	0.053
		Ardasley Village	Principally Residential	9	0.006	8	0.882	0	0.013	0	0.044	1	0.057
		Ardasley Village	Mixed	0	0	0	0.5	0	0.2	0	0.1	0	0.2
Included	ARD		1,584		1,269		27		195		82		

Status	MUN	Description	Principal_Use	All Households	pct_hhd	NH White Householder	pct_nh_wht_hh	NH Black Householder	pct_nh_blk_hh	NH Asian Householder	pct_nh_asn_hh	Hispanic Householder	pct_hisp_hh
Included	BED	Bedford Town	Principally Residential	5,190	0.892	4,522	0.871	89	0.017	123	0.024	411	0.079
		Bedford Town	Principally Residential	373	0.064	296	0.793	14	0.038	16	0.042	43	0.116
		Bedford Town	Principally Non-Residential	130	0.022	84	0.642	9	0.069	2	0.013	35	0.266
		Bedford Town	Mixed	115	0.02	76	0.658	5	0.042	1	0.01	32	0.276
		Bedford Town	Exclusively Non-Residential	6	0.001	6	0.928	0	0	0	0.013	0	0.059
		Bedford Town	Principally Non-Residential	7	0.001	6	0.957	0	0	0	0.005	0	0.033
Included	BED			5,821		4,989		118		142		522	

Status	MUN	Description	Principal_Use	All Households	pct_hhd	NH White Householder	pct_nh_wht_hh	NH Black Householder	pct_nh_blk_hh	NH Asian Householder	pct_nh_asn_hh	Hispanic Householder	pct_hisp_hh
Included	BRM	Briarcliff Manor Village	Principally Residential	2,328	0.874	2,047	0.879	45	0.019	143	0.062	79	0.034
		Briarcliff Manor Village	Principally Residential	167	0.063	152	0.91	1	0.008	6	0.033	6	0.035
		Briarcliff Manor Village	Exclusively Non-Residential	126	0.047	108	0.854	3	0.023	9	0.069	5	0.042
		Briarcliff Manor Village	Mixed	38	0.014	34	0.902	0	0.005	3	0.067	1	0.027
		Briarcliff Manor Village	Principally Non-Residential	4	0.002	3	0.701	0	0.034	1	0.161	0	0.103
		Included	BRM			2,662		2,343		50		161	

Status	MUN	Description	Principal_Use	All Households	pct_hhd	NH White Householder	pct_nh_wht_hh	NH Black Householder	pct_nh_blk_hh	NH Asian Householder	pct_nh_asn_hh	Hispanic Householder	pct_hisp_hh
Included	BUC	Buchanan Village	Principally Residential	703	0.842	609	0.866	18	0.026	7	0.011	63	0.09
		Buchanan Village	Principally Non-Residential	73	0.087	62	0.852	2	0.022	1	0.01	8	0.11
		Buchanan Village	Exclusively Non-Residential	60	0.072	46	0.776	2	0.039	1	0.017	10	0.162
Included	BUC			835		717		22		9		81	

Status	MUN	Description	Principal_Use	All Households	pct_hhd	NH White Householder	pct_nh_wht_hh	NH Black Householder	pct_nh_blk_hh	NH Asian Householder	pct_nh_asn_hh	Hispanic Householder	pct_hisp_hh
Included	BXV	Bronxville Village	Principally Residential	1,229	0.545	1,134	0.923	9	0.007	44	0.036	33	0.027
		Bronxville Village	Principally Residential	819	0.363	732	0.894	7	0.008	42	0.051	34	0.042
		Bronxville Village	Principally Non-Residential	208	0.092	178	0.856	2	0.011	16	0.079	9	0.043
Included	BXV			2,255		2,044		18		103		76	

Status	MUN	Description	Principal_Use	All Households	pct_hhd	NH White Householder	pct_nh_wht_hh	NH Black Householder	pct_nh_blk_hh	NH Asian Householder	pct_nh_asn_hh	Hispanic Householder	pct_hisp_hh
Included	CRO	Croton Village	Principally Residential	2,572	0.866	2,215	0.861	46	0.018	76	0.03	207	0.08
		Croton Village	Principally Residential	178	0.06	135	0.76	8	0.047	16	0.088	16	0.093
		Croton Village	Principally Non-Residential	151	0.051	118	0.779	3	0.018	5	0.03	23	0.154
		Croton Village	Exclusively Non-Residential	51	0.017	42	0.82	2	0.03	2	0.032	5	0.096
		Croton Village	Mixed	18	0.006	12	0.661	0	0.015	0	0.011	5	0.285
		Included	CRO			2,970		2,522		59		98	

Status	MUN	Description	Principal_Use	All Households	pct_hhd	NH White Householder	pct_nh_wht_hh	NH Black Householder	pct_nh_blk_hh	NH Asian Householder	pct_nh_asn_hh	Hispanic Householder	pct_hisp_hh
Included	CTD	Cortland Uninc	Principally Residential	9,467	0.845	7,658	0.809	535	0.057	291	0.031	886	0.094
		Cortland Uninc	Exclusively Non-Residential	1,186	0.106	966	0.815	51	0.043	37	0.032	117	0.098
		Cortland Uninc	Principally Non-Residential	416	0.037	322	0.774	26	0.062	8	0.018	54	0.129
		Cortland Uninc	Mixed	140	0.012	109	0.78	12	0.085	2	0.014	16	0.111
		Cortland Uninc	Mixed	0	0	0	0.5	0	0	0	0	0	0.5
		Included	CTD			11,209		9,056		623		338	

Status	MUN	Description	Principal_Use	All Households	pct_hhd	NH White Householder	pct_nh_wht_hh	NH Black Householder	pct_nh_blk_hh	NH Asian Householder	pct_nh_asn_hh	Hispanic Householder	pct_hisp_hh
Included	DBF	Dobbs Ferry Village	Principally Residential	1,707	0.441	1,431	0.838	53	0.031	126	0.074	79	0.046
		Dobbs Ferry Village	Principally Residential	1,010	0.261	801	0.793	43	0.042	76	0.075	82	0.081
		Dobbs Ferry Village	Mixed	781	0.202	557	0.713	76	0.098	46	0.059	91	0.116
		Dobbs Ferry Village	Exclusively Non-Residential	232	0.06	181	0.782	7	0.031	22	0.097	19	0.082
		Dobbs Ferry Village	Principally Non-Residential	142	0.037	119	0.836	2	0.015	9	0.066	11	0.077
		Included	DBF			3,873		3,089		182		279	

Status	MUN	Description	Principal_Use	All Households	pct_hhd	NH White Householder	pct_nh_wht_hh	NH Black Householder	pct_nh_blk_hh	NH Asian Householder	pct_nh_asn_hh	Hispanic Householder	pct_hisp_hh
Included	ECH	Eastchester Uninc	Principally Residential	5,192	0.664	4,592	0.884	43	0.008	312	0.06	209	0.04
		Eastchester Uninc	Principally Residential	1,793	0.229	1,550	0.865	26	0.015	104	0.058	94	0.052
		Eastchester Uninc	Principally Non-Residential	569	0.073	440	0.774	13	0.023	46	0.081	62	0.109
		Eastchester Uninc	Mixed	192	0.025	149	0.777	6	0.031	17	0.089	17	0.09
		Eastchester Uninc	Exclusively Non-Residential	59	0.008	35	0.6	1	0.013	20	0.336	2	0.031
		Eastchester Uninc	Principally Non-Residential	10	0.001	8	0.863	0	0	1	0.102	0	0.017
		Included	ECH			7,814		6,775		89		500	

Status	MUN	Description	Principal_Use	All Households	pct_hhd	NH White Householder	pct_nh_wht_hh	NH Black Householder	pct_nh_blk_hh	NH Asian Householder	pct_nh_asn_hh	Hispanic Householder	pct_hisp_hh
Included	HAR	Harrison Town	Principally Residential	7,659	0.893	6,481	0.846	69	0.009	405	0.053	630	0.082
		Harrison Town	Principally Non-Residential	392	0.046	282	0.719	0	0.001	32	0.082	74	0.188
		Harrison Town	Principally Residential	302	0.035	267	0.882	1	0.002	12	0.041	20	0.065
		Harrison Town	Mixed	173	0.02	126	0.73	5	0.03	15	0.084	22	0.13
		Harrison Town	Exclusively Non-Residential	55	0.006	50	0.918	1	0.019	1	0.012	3	0.049
Included	HAR			8,581		7,206		77		465		748	

Status	MUN	Description	Principal_Use	All Households	pct_hhd	NH White Householder	pct_nh_wht_hh	NH Black Householder	pct_nh_blk_hh	NH Asian Householder	pct_nh_asn_hh	Hispanic Householder	pct_hisp_hh
Included	HAS	Hastings-on-Hudson Village	Principally Residential	1,895	0.621	1,682	0.887	38	0.02	73	0.039	84	0.044
		Hastings-on-Hudson Village	Principally Residential	560	0.183	480	0.859	9	0.016	23	0.041	38	0.068
		Hastings-on-Hudson Village	Exclusively Non-Residential	198	0.065	169	0.857	5	0.023	9	0.045	12	0.059
		Hastings-on-Hudson Village	Principally Non-Residential	262	0.086	198	0.756	10	0.037	14	0.055	33	0.127
		Hastings-on-Hudson Village	Mixed	136	0.045	82	0.604	10	0.07	8	0.061	30	0.223
Included	HAS			3,051		2,611		71		128		197	

Status	MUN	Description	Principal_Use	All Households	pct_hhd	NH White Householder	pct_nh_wht_hh	NH Black Householder	pct_nh_blk_hh	NH Asian Householder	pct_nh_asn_hh	Hispanic Householder	pct_hisp_hh
Included	IRV	Irvington Village	Principally Residential	1,856	0.733	1,630	0.879	23	0.012	107	0.057	84	0.045
		Irvington Village	Principally Residential	416	0.164	352	0.846	6	0.015	33	0.08	22	0.052
		Irvington Village	Principally Non-Residential	155	0.061	131	0.845	2	0.014	10	0.062	11	0.071
		Irvington Village	Exclusively Non-Residential	105	0.042	94	0.89	1	0.01	6	0.059	4	0.034
Included	IRV			2,532		2,207		32		156		120	

Status	MUN	Description	Principal_Use	All Households	pct_hhd	NH White Householder	pct_nh_wht_hh	NH Black Householder	pct_nh_blk_hh	NH Asian Householder	pct_nh_asn_hh	Hispanic Householder	pct_hisp_hh
Included	LAR	Larchmont Village	Principally Residential	1,545	0.728	1,440	0.932	7	0.005	32	0.021	58	0.038
		Larchmont Village	Principally Non-Residential	425	0.2	327	0.769	28	0.065	13	0.031	54	0.127
		Larchmont Village	Principally Residential	123	0.058	104	0.841	4	0.037	3	0.026	11	0.09
		Larchmont Village	Mixed	30	0.014	29	0.945	0	0	1	0.036	1	0.019
Included	LAR			2,123		1,899		39		49		123	

Status	MUN	Description	Principal_Use	All Households	pct_hhd	NH White Householder	pct_nh_wht_hh	NH Black Householder	pct_nh_blk_hh	NH Asian Householder	pct_nh_asn_hh	Hispanic Householder	pct_hisp_hh
Included	LEW	Lewisboro Town	Principally Residential	3,996	0.905	3,693	0.924	42	0.011	87	0.022	138	0.034
		Lewisboro Town	Principally Residential	298	0.068	270	0.906	6	0.021	5	0.018	13	0.044
		Lewisboro Town	Principally Non-Residential	120	0.027	107	0.889	3	0.027	3	0.021	6	0.053
Included	LEW			4,414		4,070		52		94		157	

Status	MUN	Description	Principal_Use	All Households	pct_hhd	NH White Householder	pct_nh_wht_hh	NH Black Householder	pct_nh_blk_hh	NH Asian Householder	pct_nh_asn_hh	Hispanic Householder	pct_hisp_hh
Included	MMT	Mamaroneck Town Uninc	Principally Residential	3,406	0.766	3,011	0.884	60	0.018	130	0.038	171	0.05
		Mamaroneck Town Uninc	Principally Residential	520	0.117	448	0.862	14	0.028	18	0.035	34	0.066
		Mamaroneck Town Uninc	Principally Non-Residential	309	0.07	259	0.838	8	0.027	9	0.03	28	0.09
		Mamaroneck Town Uninc	Exclusively Non-Residential	159	0.036	144	0.906	2	0.013	5	0.032	7	0.046
		Mamaroneck Town Uninc	Principally Non-Residential	41	0.009	28	0.675	4	0.096	2	0.037	7	0.175
		Mamaroneck Town Uninc	Mixed	12	0.003	9	0.786	0	0.037	1	0.057	1	0.111
Included	MMT			4,447		3,900		89		164		249	

Status	MUN	Description	Principal_Use	All Households	pct_hhd	NH White Householder	pct_nh_wht_hh	NH Black Householder	pct_nh_blk_hh	NH Asian Householder	pct_nh_asn_hh	Hispanic Householder	pct_hisp_hh
Included	MTP	Mount Pleasant Uninc	Principally Residential	7,295	0.899	6,520	0.894	68	0.009	332	0.046	326	0.045
		Mount Pleasant Uninc	Principally Non-Residential	318	0.039	243	0.765	7	0.022	23	0.071	42	0.131
		Mount Pleasant Uninc	Principally Residential	248	0.03	212	0.856	2	0.01	13	0.052	18	0.072
		Mount Pleasant Uninc	Principally Non-Residential	150	0.019	105	0.696	3	0.02	30	0.197	9	0.058
		Mount Pleasant Uninc	Exclusively Non-Residential	105	0.013	85	0.808	1	0.013	7	0.063	12	0.112
Included	MTP			8,116		7,165		82		404		407	

Exhibit 11: Section 2 of Analysis File Regarding Principal Use and Multi-Family Zoning by Right

Status	MUN	Description	Principal_Use	All Households	pct_hhd	NH White Householder	pct_nh_wht_hh	NH Black Householder	pct_nh_blk_hh	NH Asian Householder	pct_nh_asn_hh	Hispanic Householder	pct_hisp_hh
Included	NOC	North Castle Town	Principally Residential	3,583	0.918	3,140	0.876	49	0.014	160	0.045	209	0.058
		North Castle Town	Principally Residential	135	0.035	123	0.911	0	0.002	8	0.056	4	0.029
		North Castle Town	Exclusively Non-Residential	77	0.02	50	0.65	2	0.023	6	0.075	18	0.233
		North Castle Town	Mixed	69	0.018	52	0.759	3	0.042	3	0.037	11	0.155
		North Castle Town	Principally Non-Residential	32	0.008	28	0.878	0	0.001	1	0.024	3	0.096
		North Castle Town	Principally Non-Residential	3	0.001	3	0.917	0	0	0	0.039	0	0.051
		North Castle Town	Mixed	2	0.001	2	0.902	0	0	0	0	0	0.083
Included	NOC			3,902		3,399		54		177		245	

Status	MUN	Description	Principal_Use	All Households	pct_hhd	NH White Householder	pct_nh_wht_hh	NH Black Householder	pct_nh_blk_hh	NH Asian Householder	pct_nh_asn_hh	Hispanic Householder	pct_hisp_hh
Included	NSM	North Salem Town	Principally Residential	1,744	0.961	1,606	0.921	13	0.007	18	0.01	93	0.053
		North Salem Town	Principally Non-Residential	41	0.023	31	0.751	3	0.082	1	0.015	6	0.151
		North Salem Town	Principally Residential	15	0.008	14	0.922	0	0.002	0	0.011	1	0.045
		North Salem Town	Mixed	13	0.007	13	0.95	0	0	0	0.005	0	0.034
Included	NSM			1,814		1,664		16		19		100	

Status	MUN	Description	Principal_Use	All Households	pct_hhd	NH White Householder	pct_nh_wht_hh	NH Black Householder	pct_nh_blk_hh	NH Asian Householder	pct_nh_asn_hh	Hispanic Householder	pct_hisp_hh
Included	NWC	New Castle Town	Principally Residential	5,330	0.922	4,738	0.889	59	0.011	340	0.064	155	0.029
		New Castle Town	Principally Residential	236	0.041	197	0.835	5	0.022	28	0.119	5	0.019
		New Castle Town	Principally Non-Residential	151	0.026	116	0.767	7	0.048	11	0.075	16	0.108
		New Castle Town	Exclusively Non-Residential	27	0.005	23	0.823	1	0.031	3	0.095	1	0.052
		New Castle Town	Principally Non-Residential	24	0.004	18	0.775	1	0.044	3	0.117	1	0.061
		New Castle Town	Mixed	11	0.002	9	0.849	0	0.018	1	0.107	0	0.027
Included	NWC			5,779		5,101		73		386		179	

Status	MUN	Description	Principal_Use	All Households	pct_hhd	NH White Householder	pct_nh_wht_hh	NH Black Householder	pct_nh_blk_hh	NH Asian Householder	pct_nh_asn_hh	Hispanic Householder	pct_hisp_hh
Included	OST	Ossining Town Uninc	Principally Residential	1,422	0.728	1,150	0.808	54	0.038	69	0.048	138	0.097
		Ossining Town Uninc	Principally Residential	418	0.214	362	0.865	15	0.035	17	0.041	24	0.057
		Ossining Town Uninc	Exclusively Non-Residential	71	0.036	54	0.769	2	0.031	4	0.057	10	0.143
		Ossining Town Uninc	Principally Non-Residential	42	0.022	35	0.831	0	0	0	0.006	6	0.153
Included	OST			1,953		1,601		71		90		178	

Status	MUN	Description	Principal_Use	All Households	pct_hhd	NH White Householder	pct_nh_wht_hh	NH Black Householder	pct_nh_blk_hh	NH Asian Householder	pct_nh_asn_hh	Hispanic Householder	pct_hisp_hh
Included	PDR	Pound Ridge Village	Principally Residential	1,820	0.99	1,701	0.934	21	0.011	31	0.017	54	0.03
		Pound Ridge Village	Principally Non-Residential	10	0.006	10	0.932	0	0.017	0	0.02	0	0.022
		Pound Ridge Village	Principally Non-Residential	9	0.005	9	1	0	0	0	0	0	0
Included	PDR			1,839		1,719		21		32		54	

Status	MUN	Description	Principal_Use	All Households	pct_hhd	NH White Householder	pct_nh_wht_hh	NH Black Householder	pct_nh_blk_hh	NH Asian Householder	pct_nh_asn_hh	Hispanic Householder	pct_hisp_hh
Included	PEL	Pelham Town Unic	Principally Residential	1,858	0.778	1,461	0.786	136	0.073	91	0.049	145	0.078
		Pelham Town Unic	Mixed	269	0.113	161	0.599	34	0.127	20	0.074	44	0.162
		Pelham Town Unic	Principally Non-Residential	114	0.048	57	0.499	33	0.292	6	0.056	14	0.12
		Pelham Town Unic	Principally Residential	116	0.049	62	0.533	17	0.149	9	0.077	23	0.2
		Pelham Town Unic	Mixed	16	0.007	16	0.965	0	0.006	0	0	0	0.029
		Pelham Town Unic	Exclusively Non-Residential	14	0.006	8	0.567	2	0.167	1	0.1	1	0.1
Included	PEL			2,389		1,765		223		128		228	

Status	MUN	Description	Principal_Use	All Households	pct_hhd	NH White Householder	pct_nh_wht_hh	NH Black Householder	pct_nh_blk_hh	NH Asian Householder	pct_nh_asn_hh	Hispanic Householder	pct_hisp_hh
Included	PLV	Pleasantville Village	Principally Residential	2,065	0.821	1,848	0.895	13	0.006	84	0.041	110	0.053
		Pleasantville Village	Exclusively Non-Residential	179	0.071	108	0.603	3	0.017	8	0.047	58	0.323
		Pleasantville Village	Principally Residential	141	0.056	119	0.842	1	0.007	4	0.029	17	0.119
		Pleasantville Village	Principally Non-Residential	70	0.028	50	0.718	3	0.047	2	0.032	13	0.193
		Pleasantville Village	Mixed	59	0.024	41	0.689	2	0.04	2	0.034	11	0.191
Included	PLV			2,514		2,166		22		101		210	

Status	MUN	Description	Principal_Use	All Households	pct_hhd	NH White Householder	pct_nh_wht_hh	NH Black Householder	pct_nh_blk_hh	NH Asian Householder	pct_nh_asn_hh	Hispanic Householder	pct_hisp_hh
Included	PMR	Pelham Manor Village	Principally Residential	1,430	0.771	1,279	0.895	22	0.015	54	0.038	58	0.041
		Pelham Manor Village	Exclusively Non-Residential	198	0.107	162	0.816	7	0.038	10	0.051	16	0.083
		Pelham Manor Village	Principally Residential	226	0.122	189	0.838	7	0.032	6	0.024	22	0.095
Included	PMR			1,855		1,631		36		70		96	

Status	MUN	Description	Principal_Use	All Households	pct_hhd	NH White Householder	pct_nh_wht_hh	NH Black Householder	pct_nh_blk_hh	NH Asian Householder	pct_nh_asn_hh	Hispanic Householder	pct_hisp_hh
Included	RYB	Rye Brook Village	Principally Residential	3,107	0.895	2,675	0.861	46	0.015	116	0.037	246	0.079
		Rye Brook Village	Principally Non-Residential	232	0.067	208	0.898	4	0.017	7	0.028	11	0.048
		Rye Brook Village	Mixed	50	0.015	32	0.627	2	0.036	2	0.037	12	0.237
		Rye Brook Village	Principally Residential	80	0.023	75	0.927	0	0.001	4	0.05	2	0.019
Included	RYB			3,470		2,990		52		128		270	

Status	MUN	Description	Principal_Use	All Households	pct_hhd	NH White Householder	pct_nh_wht_hh	NH Black Householder	pct_nh_blk_hh	NH Asian Householder	pct_nh_asn_hh	Hispanic Householder	pct_hisp_hh
Included	RYC	Rye City	Principally Residential	3,961	0.72	3,535	0.892	50	0.013	188	0.048	167	0.042
		Rye City	Principally Residential	745	0.135	617	0.828	11	0.014	44	0.06	59	0.08
		Rye City	Exclusively Non-Residential	391	0.071	339	0.869	6	0.016	21	0.053	22	0.058
		Rye City	Mixed	242	0.044	187	0.771	12	0.051	15	0.064	25	0.104
		Rye City	Mixed	164	0.03	153	0.931	0	0	5	0.028	5	0.031
Included	RYC			5,503		4,830		79		273		279	

Status	MUN	Description	Principal_Use	All Households	pct_hhd	NH White Householder	pct_nh_wht_hh	NH Black Householder	pct_nh_blk_hh	NH Asian Householder	pct_nh_asn_hh	Hispanic Householder	pct_hisp_hh
Included	SCD	Scarsdale Town	Principally Residential	5,326	0.974	4,476	0.84	60	0.011	606	0.114	138	0.026
		Scarsdale Town	Principally Residential	103	0.019	69	0.67	1	0.012	26	0.256	5	0.051
		Scarsdale Town	Exclusively Non-Residential	41	0.008	32	0.765	1	0.03	5	0.116	1	0.034
Included	SCD			5,471		4,577		62		637		145	

Status	MUN	Description	Principal_Use	All Households	pct_hhd	NH White Householder	pct_nh_wht_hh	NH Black Householder	pct_nh_blk_hh	NH Asian Householder	pct_nh_asn_hh	Hispanic Householder	pct_hisp_hh
Included	SOM	Somers Town	Principally Residential	5,214	0.683	4,784	0.917	46	0.009	158	0.03	185	0.036
		Somers Town	Mixed	2,239	0.293	2,142	0.957	20	0.009	29	0.013	34	0.015
		Somers Town	Principally Non-Residential	82	0.011	71	0.869	1	0.014	2	0.019	6	0.072
		Somers Town	Principally Non-Residential	58	0.008	54	0.946	0	0	1	0.01	2	0.04
		Somers Town	Exclusively Non-Residential	27	0.004	24	0.882	0	0.001	1	0.047	2	0.067
		Somers Town	Principally Residential	12	0.002	11	0.905	0	0	0	0.012	1	0.06
Included	SOM			7,632		7,086		67		190		230	

Exhibit 11: Section 2 of Analysis File Regarding Principal Use and Multi-Family Zoning by Right

Status	MUN	Description	Principal_Use	All Households	pct_hhd	NH White Householder	pct_nh_wht_hh	NH Black Householder	pct_nh_blk_hh	NH Asian Householder	pct_nh_asn_hh	Hispanic Householder	pct_hisp_hh
Included	TTN	Tarrytwon Town	Principally Residential	1,913	0.43	1,577	0.825	61	0.032	105	0.055	145	0.076
		Tarrytwon Town	Principally Residential	1,488	0.335	920	0.619	143	0.096	84	0.056	323	0.217
		Tarrytwon Town	Mixed	474	0.107	322	0.678	34	0.071	15	0.032	96	0.203
		Tarrytwon Town	Exclusively Non-Residential	312	0.07	239	0.766	14	0.044	18	0.059	38	0.122
		Tarrytwon Town	Mixed	172	0.039	83	0.48	31	0.178	31	0.177	27	0.159
		Tarrytwon Town	Principally Non-Residential	88	0.02	41	0.465	8	0.095	5	0.054	33	0.374
Included	TTN			4,447		3,182		291		258		662	
Included	TUC	Tuckahoe Village	Principally Residential	1,523	0.536	1,213	0.797	88	0.058	84	0.055	125	0.082
		Tuckahoe Village	Principally Residential	876	0.308	575	0.656	142	0.162	60	0.069	84	0.096
		Tuckahoe Village	Exclusively Non-Residential	368	0.13	287	0.779	24	0.064	28	0.075	26	0.07
		Tuckahoe Village	Mixed	76	0.027	23	0.305	36	0.481	1	0.015	11	0.141
		Included	TUC			2,844		2,098		291		173	
Included	YTN	Yorktown City	Principally Residential	11,678	0.906	10,090	0.864	291	0.025	448	0.038	764	0.065
		Yorktown City	Principally Residential	763	0.059	615	0.806	27	0.035	37	0.049	70	0.092
		Yorktown City	Exclusively Non-Residential	344	0.027	287	0.833	13	0.036	10	0.028	33	0.095
		Yorktown City	Principally Non-Residential	70	0.005	54	0.777	4	0.057	2	0.026	9	0.135
		Yorktown City	Mixed	38	0.003	37	0.967	0	0.003	0	0.004	1	0.025
		Included	YTN			12,893		11,083		334		497	
Included				136,590		116,755		3,322		6,445		8,845	
				347,106		221,647		47,446		16,124		56,677	